

Clemson Presbyterian

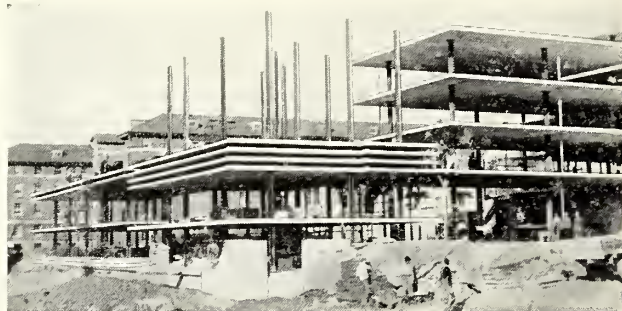


1954 SCHEDULE HOME GAMES

- Sept. 18 Presbyterian
- Oct. 2 V. P. I.
(Dads' Day)
- Nov. 6 Furman
(Homecoming)
- Nov. 27 The Citadel

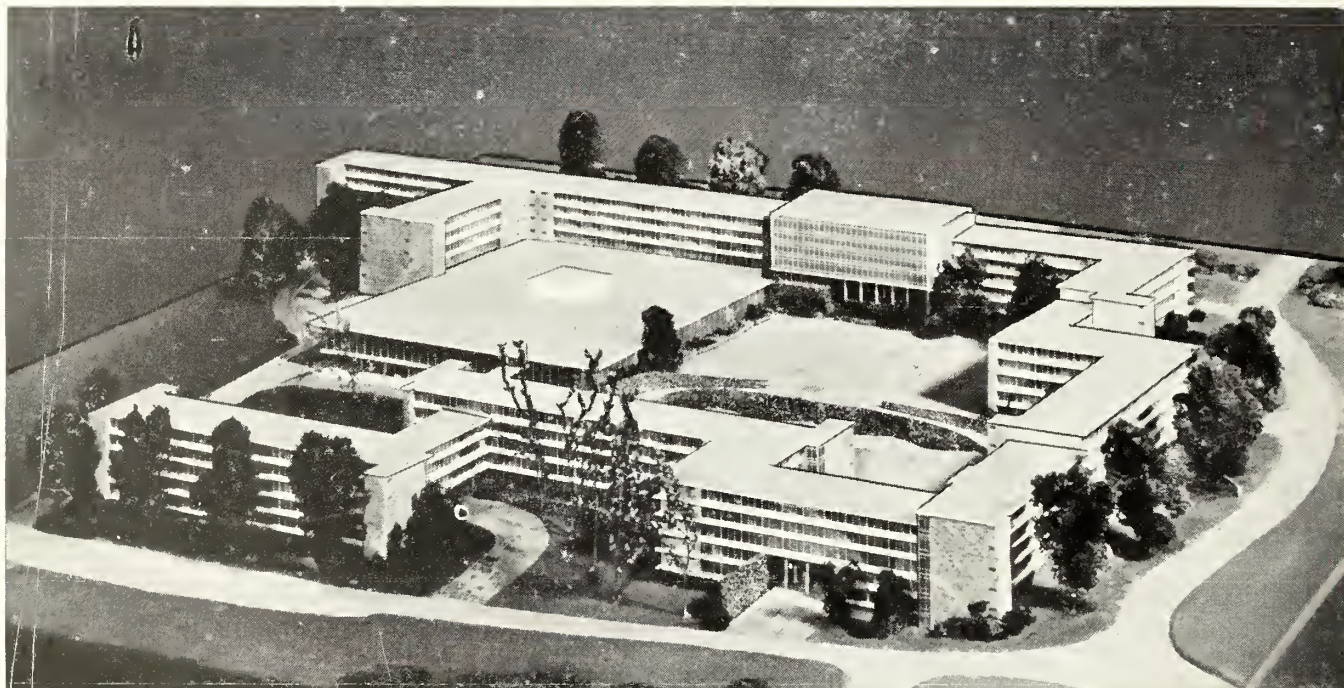
AWAY GAMES

- Sept. 25 U. of Georgia
- Oct. 9 U. of Florida
- Oct. 21 Carolina
- Oct. 30 Wake Forest
- Nov. 13 Maryland
- Nov. 20 Auburn



**LIFT SLAB GOES TO COLLEGE
TO BUILD FOR TEXTILE EDUCATION**

In The South



ARCHITECTS: LYLES, BISSETT, CARLISLE & WOLFF

A 520,000 square foot Student Dormitory built in record time at Clemson College, in South Carolina, is another part of the South's continuing program of building education and research facilities.

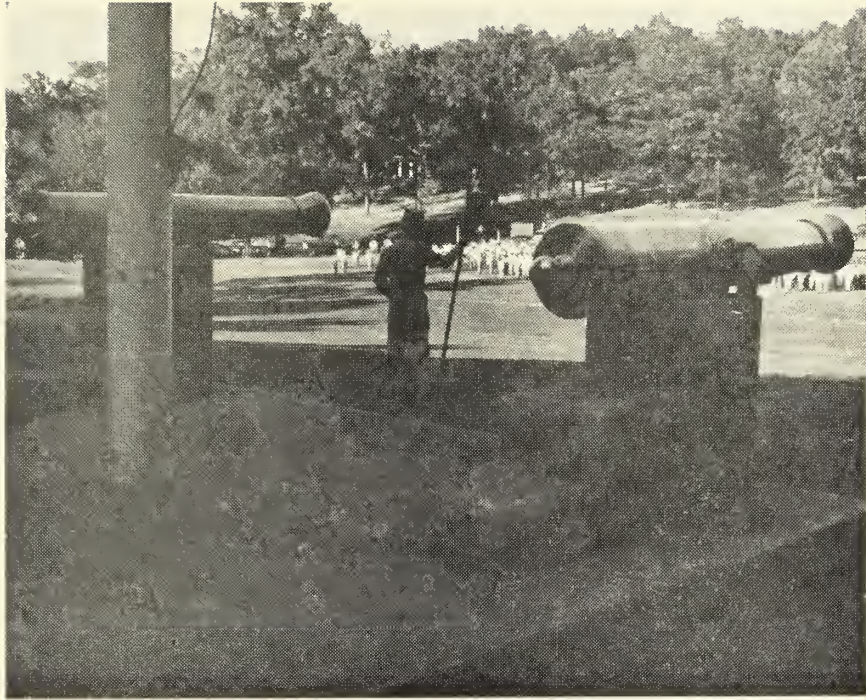
This revolution in building utilized the slabs for floors of the dormitory after lifting them to their appointed height. No framework of steel was needed—time and money were saved from the start.

But more than a revolutionary building is underway at Clemson—a growing center of textile education is making it more attractive than ever for firms in any branch of the textile industry to select the South for their home for profits both today and tomorrow.

Builders in and of the South

DANIEL CONSTRUCTION COMPANY, INC.
GREENVILLE, SOUTH CAROLINA BIRMINGHAM, ALABAMA





Official Program

Published By
CLEMSON COLLEGE ATHLETIC ASSOCIATION

Edited By BRENT BREEDIN
Director of Sports Publicity

CONCESSION STANDS

Concession stands are located immediately behind the top row of seats on either side of the playing field. The stands handle soft drinks, sandwiches, popcorn, peanuts, candy, etc. Vendors will sell these items from the aisles, also.



EMERGENCIES

In an emergency of any nature, come to the back of the pressbox. Please remember however, that since important business is being conducted within the pressbox, only cases of strict emergency can be given consideration. Telephone is located in information booth.

RESTROOMS

Ladies' restrooms are located on both sides of the stadium on the east end. Men's restrooms are located on both sides of the stadium on the West end.



IN LEAVING

In leaving the stadium, please give utmost heed to the directions from the officers controlling traffic. Every care has been taken to move cars from the college campus in the most efficient manner and cooperation from drivers will speed up the process considerably.

In COLUMBIA, S. C. Stay at Hotel

Wade Hampton

An atmosphere of the most modern appointments and quick, efficient service mellowed by easy Southern Hospitality, puts Hotel Wade Hampton out front as a model of hotel perfection. Completely air-conditioned, offering distinctive accommodations, serving the ultimate in fine foods, specializing in cordial hospitality, Hotel Wade Hampton is truly the Hotel of tomorrow . . . here for your enjoyment today.

THOMAS JEFFERSON
Birmingham, ALA.



ADMIRAL SEMMES
Mobile, ALA.



WASHINGTON
Washington, D. C.



MONTICELLO
Norfolk, VA.



MOUNTAIN LAKE
Mountain Lake, VA.



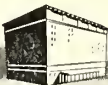
CLAYPOOL
Indianapolis, IND.



PAXTON
Omaha, NEB.



BAKER
Dallas, TEX.



JUNG
New Orleans, LA.



Carry a Universal Credit Card! It is convenient and often saves embarrassment. Address applications to: Credit Dept., The National Hotel Company, Anico Bldg., Galveston, Texas.



Use our reservation service! Call, write, or wire your nearest Affiliated National Hotel.

AFFILIATED NATIONAL HOTELS

ALABAMA		TEXAS	
HOTEL ADMIRAL SEMMES	Mobile	HOTEL STEPHEN F. AUSTIN	Austin
HOTEL THOMAS JEFFERSON	Birmingham	HOTEL EDSON	Brownwood
DISTRICT OF COLUMBIA		HOTEL BAKER	Dallas
HOTEL WASHINGTON	Washington	HOTEL TRAVIS	Dallas
INDIANA		HOTEL CORTEZ	El Paso
HOTEL CLAYPOOL	Indianapolis	HOTEL TEXAS	Fort Worth
LOUISIANA		HOTEL BUCCANEER	Galveston
JUNG HOTEL	New Orleans	HOTEL GALVEZ	Galveston
HOTEL DESOTO	New Orleans	HOTEL JEAN LAFITTE	Galveston
NEBRASKA		CORNADO COURTS	Galveston
HOTEL PAXTON	Omaha	JACK TAR COURT HOTEL	Galveston
NEW MEXICO		MIRAMAR COURT	Galveston
HOTEL CLOVIS	Clavis	HOTEL CAVALIER	Galveston
OKLAHOMA		HOTEL PLAZA	Lubbock
HOTEL ALDRIDGE	Wewaka	HOTEL LUBBOCK	Lubbock
SOUTH CAROLINA		HOTEL FALLS	Marlin
HOTEL WADE HAMPTON	Columbia	HOTEL CACTUS	San Angelo
		HOTEL MENDER	San Antonio
		ANGELES COURTS	San Antonio
		VIRGINIA	
		HOTEL MOUNTAIN LAKE	Mountain Lake
		HOTEL MONTICELLO	Norfolk



AFFILIATED NATIONAL HOTELS

J. CAREY

The NEW Clemson

Those persons who have not been on the Clemson campus in several years are in for a shock when they make their current tour of the College. The real old timer won't recognize much more than the tower of the main building and John C. Calhoun's mansion, while visitors of as recently as five years ago will also find countless evidences at every turn of "a new Clemson."

Though almost everyone today thinks of construction at Clemson in terms of the new dormitories and the agricultural group, this rather phenomenal growth started back in 1950 with the building of the new steam plant without which none of the later buildings could have been utilized.

To keep up with advances made in farm mechanization and soil conservation the agricultural engineering building was built that same year replacing an old wooden barn which had been in use since 1910. Also completed then was the seed laboratory in which better seed for the farms of the state are developed.

The now famous Clemson House and its surrounding apartment units were completed in the fall of 1950 relieving a critical housing shortage among the faculty and staff members.

During the next year the chemistry building was built and equipped to afford facilities for all Clemson students who must take basic chemistry as well as for the chemistry majors who leave the college ready to take their places in

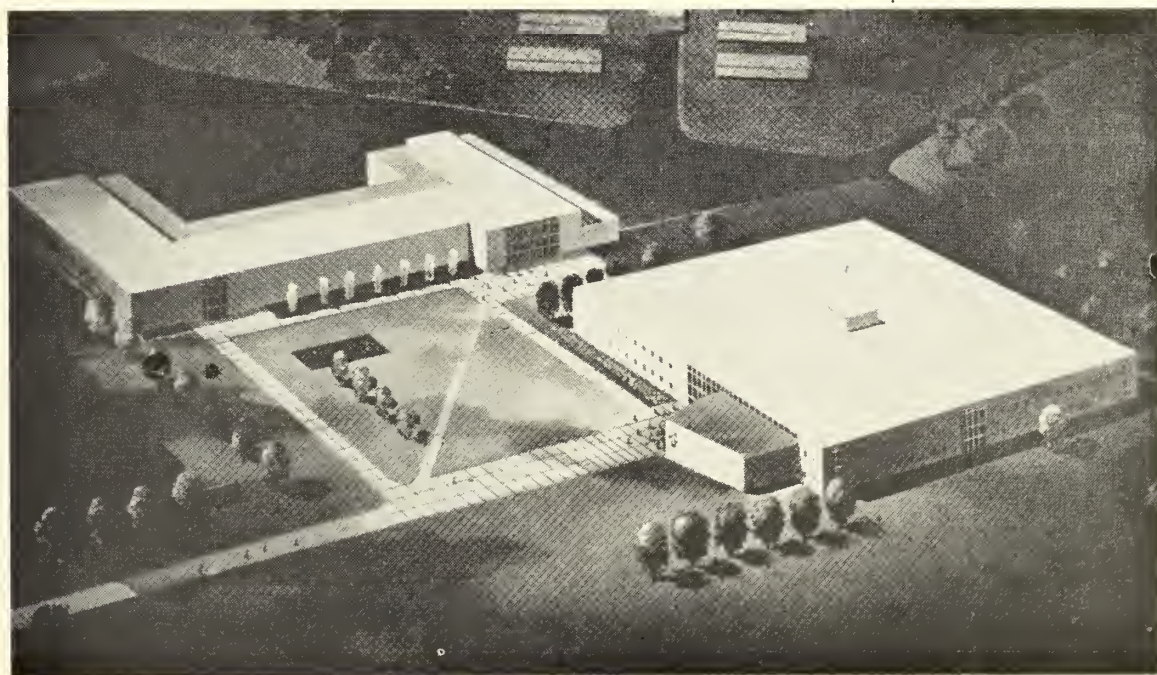
the mushrooming chemical industry in the South. In the same period the textile building, completed in 1938, was fully equipped with the latest textile machinery and devices.

In the fall of 1952 the Olin Foundation of Minneapolis, Minnesota, gave the college \$445,000 with which to construct a building to house teaching and research facilities in the field of ceramics. This move was made to help in developing South Carolina's relatively untouched, but potentially great, natural clay resources. Later the Foundation also provided \$180,000 to fill the building with the best ceramic manufacturing and testing equipment on the market.

Completed this fall, the new dormitory project contains 1000 rooms to house two students each, a dining room to accommodate 4000, complete kitchen facilities, a spacious lobby, an information center, a visitors lounge, a student canteen, club rooms, a small chapel, and a barber shop.

This structure with its five floors and 500,000 square feet of floor space is by far the largest ever attempted using the lift slab system and is the first of its kind in the Southeast. As such it has attracted much attention in the construction and engineering professions.

Work is now underway on the new agricultural group which when finished will contain a plant and animal science building, a food industry building, and greenhouses.



The New Agricultural Center



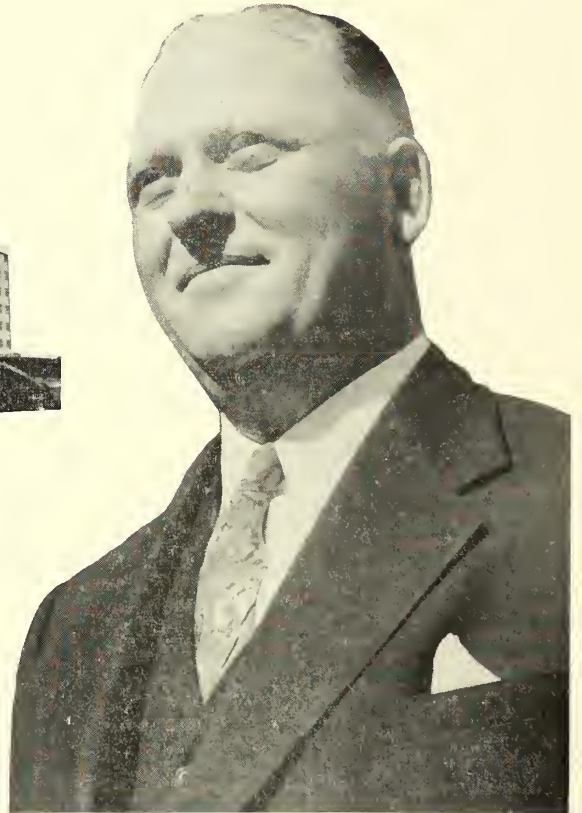
THE AGRICULTURAL-ENGINEERING BUILDING



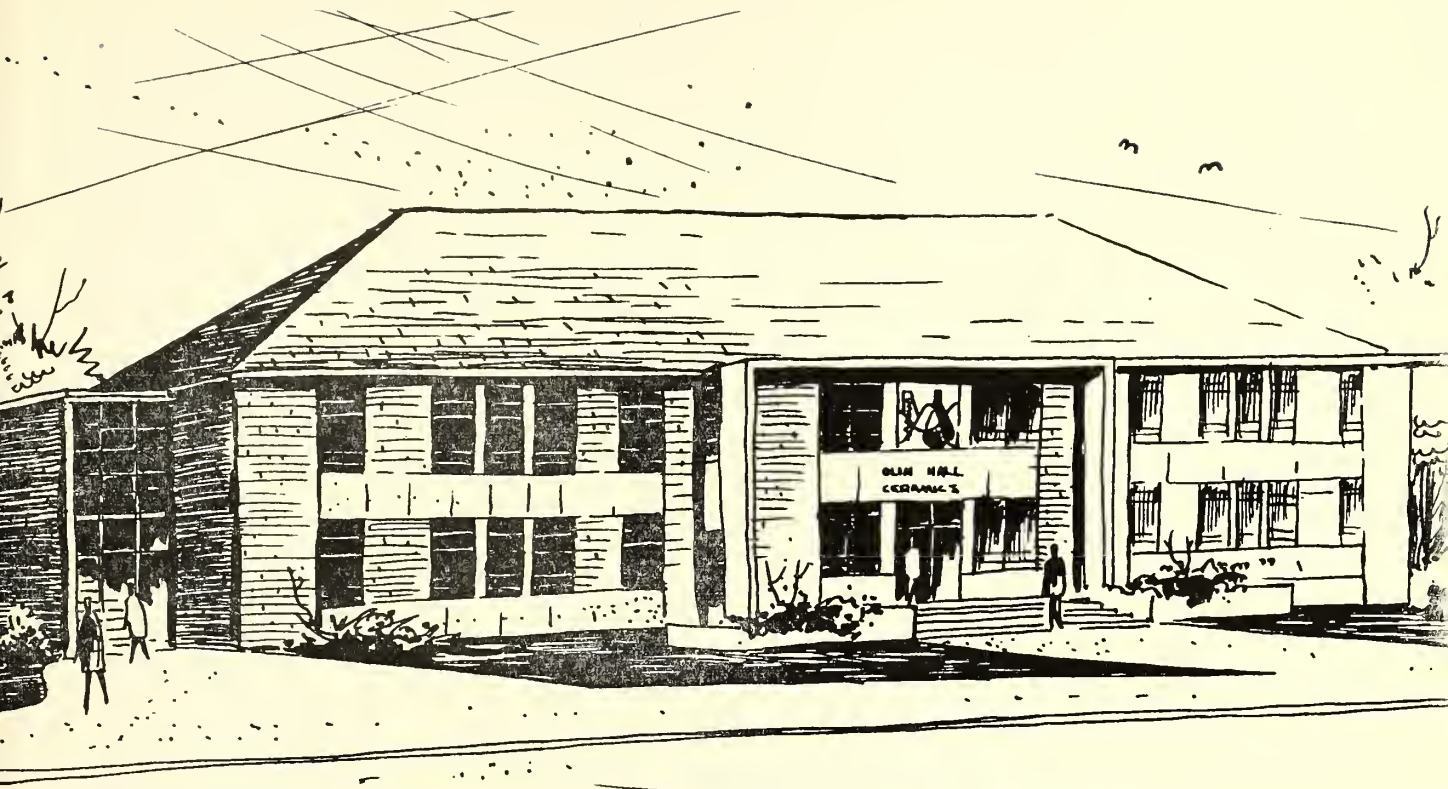
THE CHEMISTRY BUILDING



THE CLEMSON HOUSE



**DR. R. F. POOLE
CLEMSON PRESIDENT**



OLIN HALL — Ceramic Engineering Building

THE DELTA COMPANY

INCORPORATED

Manufacturers of

QUALITY SPORTS SHIRTS

AND DRESS SHIRTS

which are sold all over the country

ABBEVILLE, SOUTH CAROLINA

PENDLETON OIL MILL

Pendleton, South Carolina



The Grass on Clemson's Football

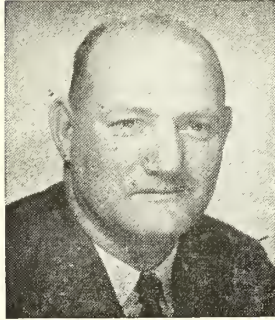
Field Was Fertilized With

Pendleton Fertilizer

HEAD COACH FRANK HOWARD

With Peahead Walker and Herman Hickman out of the college coaching field, Clemson's Frank Howard wins the "biggest character" award hands down. Like fellow Alabaman Walker and Tennessean Hickman, Coach

Howard has thrived on a reputation as jokester, hill-billy and country bumpkin. A thick Alabama drawl has helped the effect.



In reality, however, Frank Howard is one of the nation's most successful coaches. He's in his 24th year at Clemson — 15th as head coach and athletic director. Two of his teams — 1948 and 1950 — went unbeaten and were ranked in the "top ten" by the Associated Press.

Between 1948-51, Howard-coached elevens earned three bowl bids, defeating Missouri for the Gator Bowl Championship on January 1, 1949, and whipping Miami for the Orange Bowl Crown on January 1, 1951. Miami beat the Tigers in 1952 for the Gator Bowl title.

A single wing expert for 22 seasons, Coach Howard changed to the T-formation in 1953 and was outgaining such veteran T-teams as Georgia Tech, Wake Forest and Auburn before the first campaign was over. A notori-

ously hard worker, he and his assistants just dug into the new formation and came up with several variations of plays that would gain ground and score touchdowns.

In addition to his duties as football coach, Frank Howard is also kept busy with chores as athletic director at Clemson. At a recent meeting of athletic directors, he embarrassed several in attendance by asking "What do you do when your athletic program loses money? I've never been in that fix but have often wondered."

The young Howard was reared in the Mobile Ala., area, attending the local high school where he made quite a name for himself as student, leader and athlete. He was considered too small at 130 pounds for Alabama but attended the University at Tuscaloosa anyhow and was soon making his presence felt in the line from his guard position. He was a first stringer on Wallace Wade's Rose Bowl team of the 1930 season, being called the "Little Giant" on the Crimson Tide's "Herd of Red Elephants."

Still very active, the Clemson mentor insists on coaching his linemen altogether, in addition to supervising the over-all practice. Until recently, he didn't mind demonstrating what he meant about blocking though wearing no shoulder pads.

Coach Howard is married to the former Anna Tribble of Anderson. They are the parents of two children, Alice 18, and Jimmy 12.

PHONE 2-2727

309 N. MAIN STREET

Rosamond's Goodyear Service



Distributors for

Goodyear Tires

Lifeguards

Batteries & Accessories

General Electric Appliances



GREENVILLE, SOUTH CAROLINA

ASSISTANT COACHES - - CLEMSON COLLEGE



RUSS COHEN, Vanderbilt '17, is the senior member of the varsity coaching staff in age, though a latecomer (1947) in joining Clemson . . . A former head coach at LSU and Cincinnati, Cohen was also an assistant to Wallace Wade during that coach's years at Alabama in the 1920's . . . He's considered a defensive specialist, serving in that capacity since his arrival in Tigertown.



COVINGTON (Goat) McMILLAN, Clemson '30, returned to Clemson as backfield coach in 1937 after first serving as head coach at Griffin (Ga.) High and as an assistant at Furman . . . An All-South tailback at Clemson, he's coached some of the school's finest backs since arriving on the campus—Banks McFadden, Bobby Gage, Ray Mathews, Fred Cone, etc.



BOB JONES, Clemson '30, has been coaching at Clemson since his graduation — first working with the freshmen and more recently with the ends . . . During his playing days with the Tigers, he was an All-South end and captain of the varsity basketball team . . . Was head boxing coach until Clemson dropped the sport . . . Is chief counselor of the football players.



BOB SMITH, Furman '34 joined the Clemson varsity staff as a "T" specialist in 1950 on a part time basis, but has been a full time operator since early 1951 . . . Former assistant and head coach at Furman, he began experimenting with the "T" while stationed at Jacksonville in the Navy during World War II . . . He was named Atlantic Coast Conference Baseball Coach of the Year in 1954 as Clemson won the A.C.C. championship.



* COMFORT

* BEAUTY

* ENTERTAINMENT

CLEMSON THEATER

Clemson, South Carolina

Always The Best In Film Fare



FOOTBALL

BASKETBALL

GOLF BASEBALL TENNIS

»«

BILL DILLARD'S

Sporting Goods

127 E. Whitner P.O.Box 473 Phone 1887

ANDERSON, SOUTH CAROLINA

»«

Archery Fishing Swimming

Hunting Sportswear



The Chiquola Manufacturing Company was founded in 1902. Through constant adoption of new ideas, new methods and modern machinery it has continued to grow and play an important part in the industrial progress of South Carolina.

During this long period of successful operation under the same management, Chiquola has produced more than ONE BILLION YARDS of cotton fabrics; it has purchased more than FIFTY-TWO MILLION DOLLARS worth of cotton from the farmers of the South; it has paid MILLIONS of dollars in taxes to the City, County, State, and Federal Governments; it has donated thousands of dollars to schools, churches, orphanages, and charitable organizations; and last but not least, it has paid more than TWENTY-SIX MILLION dollars in wages to the hundreds of fine people who have been on its payroll over the years.

Former CLEMSON MEN occupy important positions in our management and we are fully cognizant of the important part this outstanding institution is playing in the development of the South through the education of our leaders of tomorrow.

When autumn leaves are falling and the strains of Tiger Rag resound from the hills of the Blue Ridge, we lend our voice to the plaudits of the multitude with that old familiar refrain, "GO - TIGERS - GO"

CHIQUOLA MANUFACTURING COMPANY

HONEA PATH, SOUTH CAROLINA

FOOTBALL OUTLOOK AT CLEMSON AND PRESBYTERIAN

By **BRENT BREEDIN**
Clemson Sports Publicity Director

Experience, added depth and a young gentleman by the name of Don King are reasons why optimism reigns on the Clemson campus as the 1954 football season approaches.

This time last year, with Coach Frank Howard and his young Tigers entering the T-formation field for the first time, question marks were popping up everywhere with the discussion of Clemson football.

Would Don King, a pretty fair freshman tailback in 1952, be able to hold down the important T-quarterback position?

Should Coach Howard use a split-T attack, a straight-T offense or variations of the T-formation?

Could members of the Clemson team, accustomed to playing two-platoon football, be taught to perform well on both offense and defense?

Don King, a rising junior, passed his quarterback test so convincingly that he's rated by most experts to be the outstanding back in the Atlantic Coast Conference today. In his final four games of 1953, King ran and passed for 773 yards and eight touchdowns.

Coach Howard's T-offense consists of several variations, and, according to one head football coach who watched Clemson's spring intra-squad game, "is 400 per cent improved over this time last year." Actually, the Clemson offense took shape in the final four games of 1953. The Tigers outgained veteran "T" teams Wake Forest, Georgia Tech, The Citadel and Auburn in succession.

Competition, which means depth, has been evident during September practice. The 23 returning lettermen are having the fight of their lives to keep "playing" positions from going to members of the rising sophomore class. Two of last year's frosh stars—right halfback Jim Coleman and right guard Dick DeSimone—finished the spring on the first 11, while six others—ends Billy Hudson and Willie Smith, guard H. B. Bruorton, tackle Dick Marazza and backs Charlie Bussey and Joel Wells concluded the drills on the second eleven.

Clemson's four co-captains—end Scott Jackson, tackle Clyde White, guard Mark Kane and left halfback Buck George — hold down starting berths along with lettermen Walt Laraway at end, Tommy Mattos at tackle, Hampton Hunter at center, Billy O'Dell at fullback, Joe Paliei at right half, King at quarterback, and DeSimone at right guard.

By **BEN HAY HAMMETT**
Presbyterian Publicity Director

If a few key freshmen — particularly at tackle — can hit varsity stride early in the season, then Presbyterian College should field a more improved team than in 1953.

A spirited and rugged band of unheralded players surprised the football public last year by handing P. C. a record of five wins, three losses and a tie — the best in seven years against the nation's toughest small-college schedule.

An even tougher slate faces Coach Bill Crutchfield now as he moves into his first campaign as head coach, so he has a job well cut out for him in trying to equal the '53 mark — even with an improved ball club.

The pre-season estimate in brief: a fairly strong first-string line, depending upon freshmen for reserve strength; a doubtful backfield, lacking in speed afoot but dangerous in the air.

The transition from gloom to optimism over forward wall prospects came cautiously after the opening week of practice, pointing to a stronger line than Presbyterian had hoped to field this year. The big difference is at tackle, where only one letterman and one squad-member are back from last year. Lee Frierson of Arcadia, Fla., played jam-up ball as a freshman starter last fall and Robert Harrington of Mont Clare improved considerably in spring practice, but they reported to camp needing assistance. Then along came five big tackles averaging well over 200 pounds. Their performance to date has suddenly transformed the tackle positions from a headache to a bulwark.

The guard positions are securely mounted. All-State candidate Luther Shealy of Pacolet and Walter Yates of Norfolk, Va., two fast and aggressive all-round performers, handling the starting assignments the same as last year. Sophomores Tommy Warren of Allendale, a real hustler who blocks and tackles hard, and Alvis Poe of Rock Hill are the number two boys.

Center is manned by three rugged performers: Frank Boulware of Rock Hill, outstanding senior mauler; Jimmy Allen of Conway, a fierce linebacker now recovering from a broken foot; and Paul Parker, a promising young freshman from Steubenville, Ohio. Four lettermen have the Blue Hose flanks well staffed, particularly on offense. A group of ball-hawking receivers are: Charles Twitty and Bobby Jackson, both of Charlotte; Joe Counts of Brunswick, Ga.; and Ken Daughtry of Macon, Georgia.

The Presbyterian backfield will be even slower afoot than last year, so the emphasis once more will be upon passing. And again it will be the strong left arm of Quarterback Harry Hamilton of Seneca.

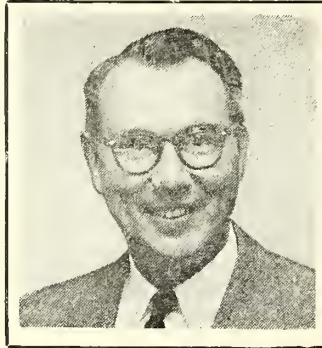
The starting halfbacks appear to be: George Blue of Union and Sophomore Gene Butler of Conway.

The shift of Carter from fullback left this post minus a letterman, but into this void sailed Freshman Dick Goudy of Barberton, Ohio.

YOUR BEST BUY

JIM ANDERSON

. . . is no stranger to the sports world. A veteran newsman, Jim recently turned his talents toward providing readers of The Greenville News with the finest morning sports pages in upper South Carolina. Jim and his versatile staff assure you complete and unbiased coverage of every sports event, large and small.



YOU GET MORE

- ☆ HIGH SCHOOL FOOTBALL STORIES
- ☆ EXCLUSIVE FOOTBALL PICTURES
- ☆ EXCLUSIVE FOOTBALL STORIES
- ☆ GAME STORIES-COAST-TO-COAST
- ☆ GAME SCORES-COAST-TO-COAST
- ☆ ACTION PHOTOS-COAST-TO-COAST



ANTHON FOY . . .

. . . has been reporting the sports scene in upper South Carolina for the last 15 years. He knows all the angles of every sport. Anthon likewise knows how to tell the full story of each sporting event in a manner that makes his Greenville Piedmont sports pages the best read of any upper South Carolina afternoon newspaper.

NO EXTRA COST . . .

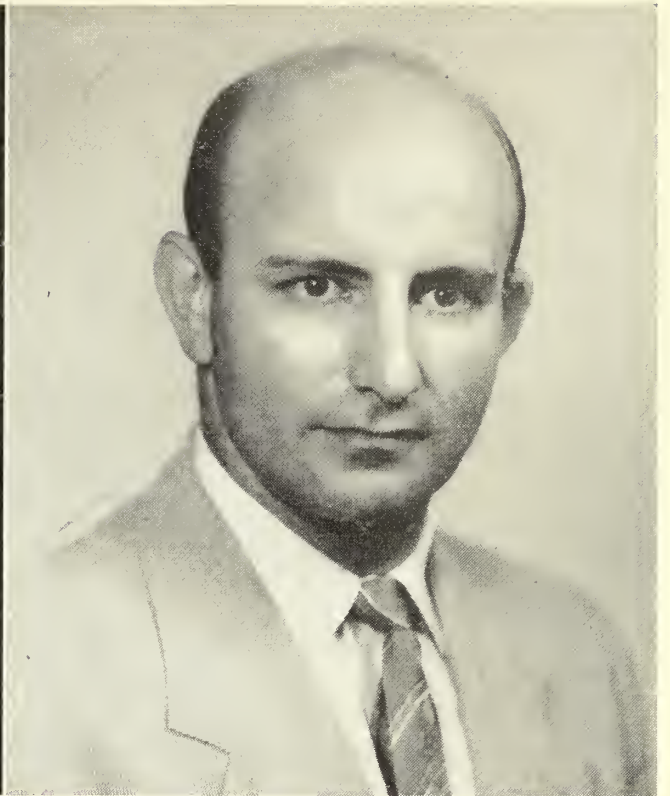
. . . is involved. Readers of South Carolina's finest daily newspapers, The News and The Piedmont, get complete papers with all the news presented fairly, plus full picture coverage, the best in features and comics, and on Sunday Parade Magazine in The News.

Greenville News
MORNING & SUNDAY
GREENVILLE PIEDMONT
EVENING

EVERYDAY



Dr. Marshall W. Brown, President, Presbyterian College



Bill Crutchfield, Head Coach, Presbyterian College



Presbyterian's William P. Jacobs Science Hall



BANKS McFADDEN GAINS

Stars Shine Against P. C.

It's the 25th consecutive Clemson-Presbyterian game tonight, and if tradition holds true, one or more Clemson backs will shine.

In 1939, Clemson's Cotton Bowl team found the Blue Hose tough; yet, Banks McFadden netted 173 yards on the ground and 50 more through the air to spark an 18-0 win.

In 1942, Marion (Butch) Butler had a field day for the Tigers, running for 192 yards in 18 carries for a 32-13 Clemson win.

In 1945, Clemson dealt Presbyterian one of its most decisive setbacks, 76-0, as Bobby Gage ran for 144 yards and passed for 61.

In 1947, Gage improved on his freshman performance, gaining 182 yards in six rushes and completing three of five passes for 98 more yards in a 42-0 triumph.

In 1949, Ray Mathews ran for 161 yards in a 69-7 Clemson victory.

In 1950, Fred Cone galloped for 143 yards in a 55-0 Tiger win.

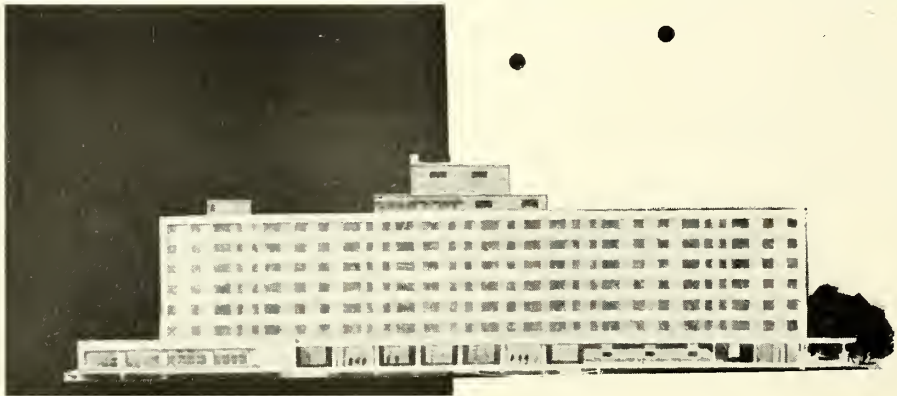
In 1951, Billy Hair netted 174 yards rushing and 123 yards passing to spark a 53-6 Clemson verdict.

And in 1952, Buck George had the best day of his career, in racing for 204 yards and three touchdowns in a 53-13 win for the Tigers.

"One of the best in the South . . . ultra-modern . . . says



After
the Game
Meet Your
Friends
in the
TIGER
TAVERN
in the
Lower
Lobby



Clemson
AAA *House*

In the foothills of the beautiful Blue Ridge Mountains, you'll find the Clemson House located in a unique setting — right on the campus of Clemson College. Here you will find all of the services of a great metropolitan hotel yet you will be far away from the noise of a large city. And you'll enjoy the beautifully landscaped grounds and the flower beds. The splendid accommodations and the excellent cuisine offered at the Clemson House are combined with warm friendly hospitality and fine service. The Clemson House is a gem among fine hotels, and the rates are almost unbelievably low. All rooms are air conditioned. Four dining rooms and the Tiger Lounge and Coffee Shop. There is swimming, fishing and golf nearby

FRED L. ZINK, JR., Manager

On East Edge of Clemson, S. C., on U.S. 78, 123 and State 28.

1954 BLUE STOCKINGS



GENE ALTMAN B



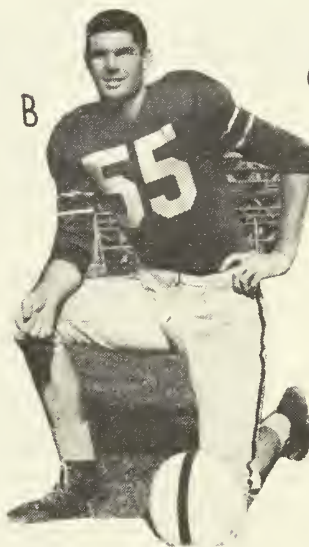
HARRY HAMILTON B



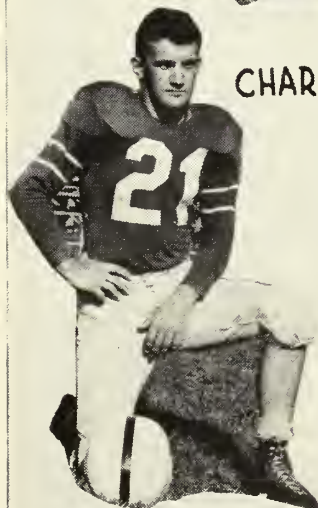
GENE CARTER
B



CHARLES TWITTY
E



JOE COUNTS
E



GEORGE BLUE B



BOBBY JACKSON E



GENE BUTLER B

A Touchdown Is A Touchstone of Teamwork!

Though it takes but one man to make a touchdown, his teammates help to make it possible. The better the teamwork, the more victories. Star players are important, but nevertheless are dependent on every man doing his job.

A sale is like a touchdown in that it is crossing the business goal line. The salesman will sell better if he has a good organization or team behind him.

The Irving L. Wilson Company, manufacturer of Clemson uniforms, is constantly striving to improve the teamwork of its organization. We believe we serve our customers well only when every person in our organization, no matter what his job, performs his duties with efficiency, initiative, and good spirit.

Here's wishing Clemson many a Tiger Touchdown!

IRVING L. WILSON COMPANY

No 1 Highland Avenue

BALA-CYNWYD, PENNSYLVANIA

1954 BLUE STOCKINGS



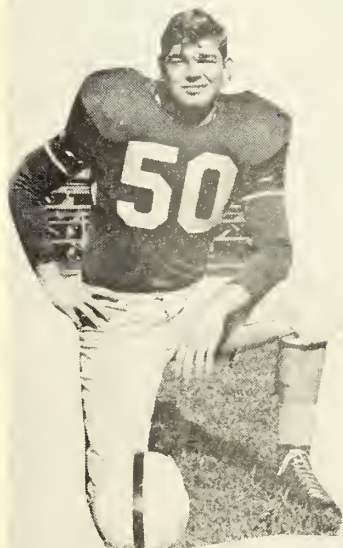
LUTHER SHEALY G



JIMMY ALLEN C



LEE FRIERSON T



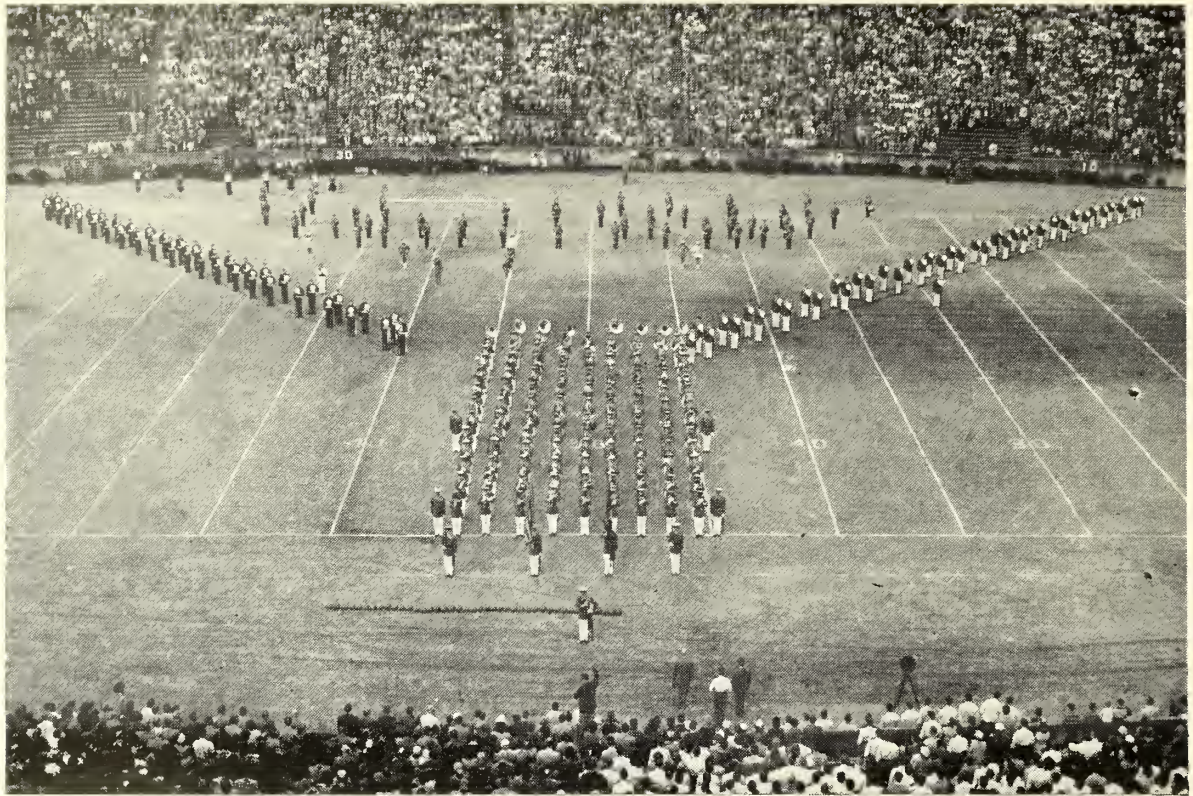
FRANK BOULWARE C



WALTER YATES G



BOB HARRINGTON
T



Clemson College Marching Band

**HEYWARD MAHON
COMPANY**



The Quality Store For
Men and Boys



**GREENVILLE
SOUTH CAROLINA**

Clemson Headquarters in Greenville

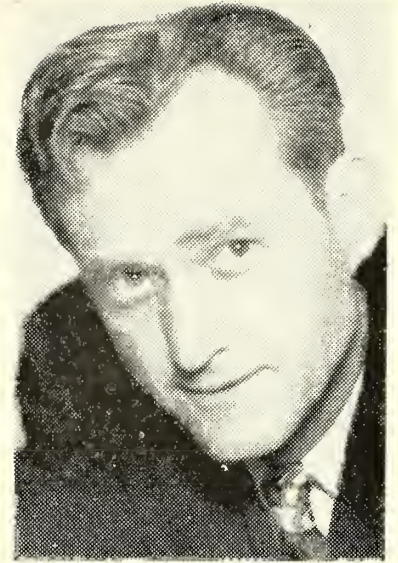


The "Ole Red Head" gives readers of

The Anderson Independent

TOPS IN SPORTS COVERAGE

"Red" Canup, with an able staff of writers and photographers, covers the MOST of the BEST of the sports events in this area! For solid enjoyment, read THE INDEPENDENT sports pages. And follow the "Ole Red Head's" column daily and Sunday!



"RED" CANUP
Sports Editor

WAIM-TV . . . Channel 40
CBS-TV Live Programs



BRENT BREEDIN
Daily Mail Sports Columnist

The Daily Mail

Features the comment of an outstanding sports authority, BRENT BREEDIN, together with many other top sports page features — each afternoon! You'll enjoy the sports pages of THE ANDERSON DAILY MAIL — for 55 years one of the South's Great Newspapers.

WAIM-TV . . . Channel 40
Live CBS Programs

THE CIRCULATION OF ANDERSON'S DAILY NEWSPAPERS IS MORE THAN

50,000

Leading All North And South Carolina Publications In Gains For 10 Years

Tune WAIM and WCAC (FM — named for Clemson College)

for ALL CLEMSON GAMES! If the Clemson Tigers went to Hades (to play football, that is) the ANDERSON radio stations would be in there broadcasting the games! For 19 years WAIM has maintained studios on the Clemson Campus and followed the TIGERS game by game! AND . . .

WAIM-TV . . . CBS-TV for ANDERSON-GREENVILLE AREA
Channel 40!

**Your car will run like a
Clemson football player on**

SHELL OIL PRODUCTS



Real Power . . .

Shell Premium Gasoline Now Contains **TCP**

THE GREATEST GASOLINE DEVELOPMENT IN 31 YEARS
UP TO 15% MORE POWER . . . MORE MILEAGE

KING OIL CO.

Shockley Ferry Road

and

HOME OIL CO.

East River Street

JOBBER OF SHELL PRODUCTS

Anderson, South Carolina

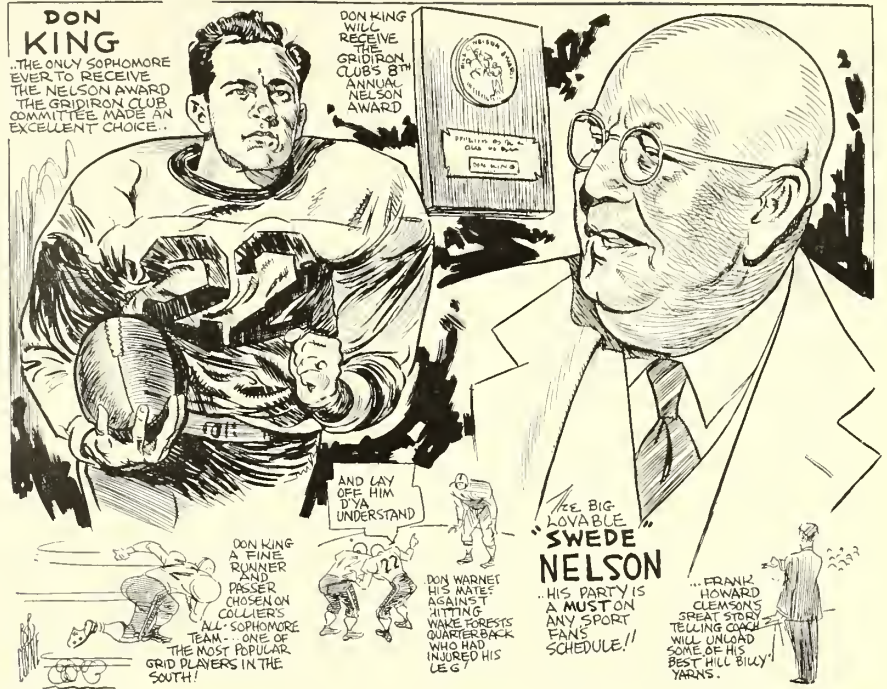
When Clemson quarterback Don King was tapped by the Boston Gridiron Club as college football's 1953 recipient of the Nils (Swede) Nelson Award for Sportsmanship, his coaches, teammates and opponents alike were unanimous in their approval.

Though one incident in the Wake Forest game was largely responsible for the Boston's Club's selection, Don's natural traits of sportsmanship and unselfishness also figured in the choice.

Praising his teammates for their blocking and tackling, helping an opponent to his feet, refusing to let the countless words of acclaim written about him change his unspoiled outlook, King is everyone's favorite.

The incident which won for him the Nelson Award (pictured in cartoon form at left) was as follows:

In the Wake Forest game, opposing quarterback Sonny George injured his knee and was stretched out on the field for several minutes while the Wake Forest trainer worked on him. Don King kneeled over George and talked to him during



Reprinted from *The Boston Post*,

most of this timeout, then returned to the Clemson huddle and told his teammates: "Listen, George has got a bad knee. If he gets hit on it again, he might not play any more this year

or might even get hurt permanently. If you have to hit him again today, hit him high." The incident was told (and confirmed) by the Clemson regulars sometime later in the season.

CLEMSON'S FOOTBALL TEAM

AND

CLEMSON'S TEXTILE SCHOOL

ARE RATED AT THE TOP BY

TEXTRON SOUTHERN

PLANTS IN

NORTH CAROLINA, SOUTH CAROLINA, AND GEORGIA



FOOTBALL MANAGERS work the longest hours and receive the least credit of any group working in college athletics. Spearheading the managers in 1954 are Earl Herndon of Fountain Inn (left) and Gerald Fleming of Anderson, two conscientious young men in the junior class at Clemson.

L. J. Forrester
President

L. J. Forrester, Jr.
Vice President

GREENVILLE AUTO SALES CO.
INCORPORATED

"YOUR FRIENDLY FORD DEALER"

PARTS USED CARS SERVICE

Phone 2-2461 Cor. E. McBee & Church
GREENVILLE, SOUTH CAROLINA

DONUTS ARE BEST WHEN
YOU BUY THEM AT THE

**Carolina Creme Donut
Shop**

309 Greenville Street
ANDERSON, S. C.

Compliments of

Belton Bottling Company

Bottlers of

ORANGE CRUSH and NU GRAPE

Belton, South Carolina

Registered Jewelers American Gem Society

FINE DIAMONDS WATCHES
STERLING SILVER CHINA
"WHAT WE SAY IT IS, IT IS"



H A L E ' S

Leading Jewelers and Diamond Merchants
Since 1856

GREENVILLE, SOUTH CAROLINA



CLEMSON'S CO-CAPTAINS Buck George, Mark Kane, Clyde White and Scott Jackson (left to right) have held down key positions for the Tigers since 1951. Halfback George was a regular on the Gator Bowl eleven of '51 as a freshman; end Jackson and tackle White were regulars in '52 and '53; and Kane took over as a regular guard last fall.

FOR A QUICK SNACK BEFORE AND AFTER THE GAME

Stop At . . . **DAN'S** Across the street from
 KLUTTZ STEAK HOUSE

* * * * *

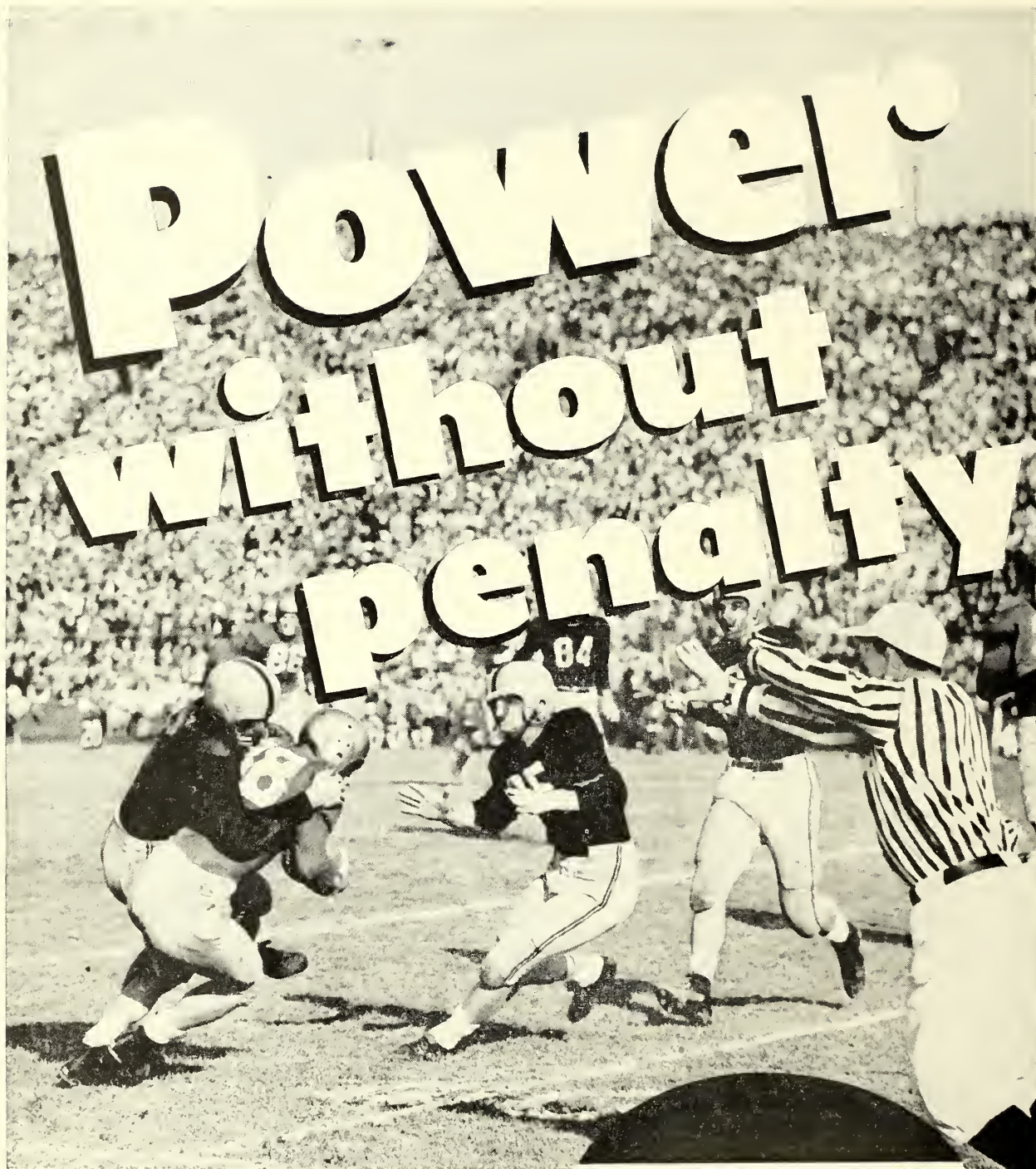
When . . . better teams are had, Clemson will have them.

When . . . better coaches are had, Clemson will have them.

When . . . better Country Ham and Steaks are served, Kluttz will serve them.

KLUTTZ STEAK HOUSE

CLEMSON, SOUTH CAROLINA



In a football game, the power of the whole team can be wasted by penalties.

So, too, in motor fuels. An additive in a premium gasoline can cause a harmful metallic deposit—can make your car pay a penalty in lost power.

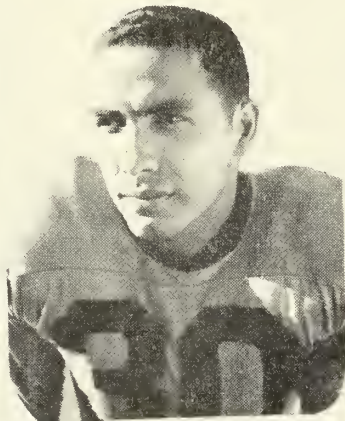
Amoco-Gas *has* no additive because it needs none. It's *pure* petroleum. It delivers power without penalty. Just *test* it!

AMERICAN OIL COMPANY

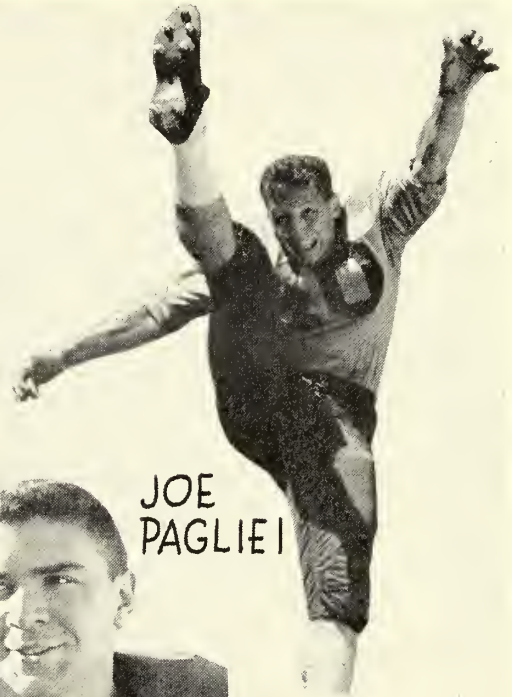
CLEMSON'S 1954 HALFBACKS



JIM COLEMAN



BUCK GEORGE



JOE
PAGLIEI



KEN MOORE



DOUG THOMPSON



"SHOT" ROGERS



JOEL WELLS



BOB PAREDES



LEM M'LENDON

PENALTIES

LOSS OF FIVE YARDS

1. Taking more than five times out during either half (except for replacement of injured player).
2. Illegal delay of game.
3. Failure to complete substitution before play starts.
4. Violation of kickoff formation.
5. Player out of bounds when scrimmage begins.
6. Putting ball in play before Referee signals "Ready-for-play".
7. Failure to maintain proper alignment of offensive team when ball is snapped. Also, backfield man illegally in motion.
8. Offside by either team or encroachment on neutral zone.
9. Attempt to draw opponents offside.
10. Crawling by runner.
11. Illegal forward pass (includes intentional grounding of forward pass). Also loss of down.
12. Taking more than two steps after Fair Catch is made.
13. Player on line receiving snap.
14. Any violation of the scrimmage formation.

LOSS OF FIFTEEN YARDS

15. Team not ready to play at scheduled time.
16. Violation of rules during intermission.
17. Illegal return of suspended player.
18. Interference by member of offensive team with defensive player making pass interception. (Also loss of down.)
19. Interference with opportunity of player of receiving team to catch a kick.
20. Illegal use of hands or arms by offensive player.
21. Tackling or blocking defensive player who has made fair catch.
22. Roughing the kicker.
23. Piling up, hurdling, clipping.
24. Tackling player out of bounds, or running into player obviously out of play.
25. Coaching from sidelines.
26. Failure to stop one full second following shift.
27. Defensive holding.
28. Invalid Signal for Fair Catch.

OTHER PENALTIES

29. Striking an opponent with fist, forearm, elbow or locked hands, kicking or kneeling — Mandatory disqualification of offending player plus loss of fifteen yards.
30. Foul within the one yard line—half the distance to the goal.
31. Interference by defensive team on forward pass—passing team's ball at spot of foul.
32. Forward pass being touched by ineligible receiver beyond the line of

scrimmage—loss of fifteen yards from spot of preceding down and loss of a down.

33. Illegal touching of kicked ball within opponent's ten yard line — touchback.

34. Flagrantly rough play or unsportsmanlike conduct — Mandatory disqualification plus loss of fifteen yards.

35. Eligible pass receiver who goes out of bounds and later touches a forward pass — loss of down.

REFEREES' SIGNALS



1. Offside



2. Illegal procedure or position



3. Illegal motion



4. Illegal shift



5. Illegal substitution



6. Delay of game



7. Personal foul



8. Roughness and piling on



9. Clipping



10. Roughing the kicker



11. Unsportsmanlike conduct



12. Defensive holding



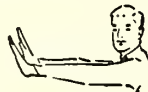
13. Illegal use of hands and arms



14. Intentional grounding



15. Illegally passing or handing ball forward



16. Forward pass or kick catching interference



17. Ineligible receiver down field on pass



18. Ball illegally touched, kicked or batted



19. Incomplete forward pass, penalty declined, no play or no score



20. Crawling, helping the runner or interlocked interference



21. Ball dead; if hand is moved from side to side: touchback



22. Touchdown or field goal



23. Safety



24. Time-out



25. First down



26. Ball ready-for-play



27. Start the clock or no more time-outs allowed



ENJOY THE GAME. RAISE AND



CLEMSON COLLEGE ROSTER

No.	Name	Age	Ht.	Wt.	Hometown	Class
Ends						
46	Bowen, Joe*	20	6-2	190	Villa Rica, Ga.	Jr
57	Bowick, Ray	20	6-1	190	Greenwood	So
62	Hicks, Harry	20	6-0	185	Kershaw	So
45	Hudson, Bill	19	6-5	210	N. Charleston	So
78	Jackson, Scot*	22	6-1	185	Manning	Sr
63	Laraway, Walt*	21	6-0	180	McKeesport, Pa.	Jr
38	Rivers, Dalton	20	6-3	195	Chesterfield	So
76	Smith, Willie	19	6-0	190	Spartanburg	So
85	Wall, Pete*	21	6-1	200	Charleston	Jr
Tackles						
47	Crain, Willis	21	6-2	220	Chester	Jr
60	Inabinet, B. C.*	20	6-6	240	Columbia	Jr
44	Marazza, Dick	21	6-4	220	Greensburg, Pa.	So
43	Mattos, Tommy*	21	6-3	220	Greenville	Sr
27	Sease, Tommy	19	6-0	190	Clinton	So
51	White, Clyde*	22	6-2	210	Greenville	Sr
Guards						
39	Bruorton, H. B.	20	5-10	190	Georgetown	So
68	Bunton, Don	19	6-0	190	Pelzer	So
25	DeSimone, Dick	20	5-11	190	Avonmore, Pa.	So
87	Greene, Earl	19	6-0	190	St. Stephen	So
72	Greene, Johnny	21	6-0	200	Union	Jr
28	Jackson, Jerry	21	5-11	196	Bennettsville	Jr
41	Kaltenbach, Leon	18	5-10	210	Clairton, Pa.	So
56	Kane, Mark*	22	5-11	205	Millburn, N. J.	Sr
86	Monroe, Kent	19	5-10	186	Irwin, Tenn.	So
65	Priester, Buck*	21	5-11	190	LaGrange, Ga.	Jr
35	Rhinehart, Don	20	5-10	190	Inman	So
Centers						
24	Avery, Wingo*	21	6-0	200	Newnan, Ga.	Jr
64	Hunter, Hampton*	20	6-4	220	Central	Jr
75	McClellan, Bill*	22	5-11	225	Dillon	Sr
81	Staples, Dink	21	6-0	205	Abbeville	Jr
Quarterbacks						
20	Bussey, Charlie	20	6-0	165	Henderson, N. C.	So
77	Frick, Larry	19	6-2	185	Columbia	So
66	King, Don*	20	5-10	165	Anderson	Jr
2	Ross, Don*	22	5-11	180	Rock Hill	Sr
36	Williams, Tommy*	20	6-0	180	Paris	Jr
Halfbacks						
22	Coleman, Jim	19	6-0	170	Honea Path	So
30	George, Buck*	22	6-0	170	Rock Hill	Sr
55	McLendon, Lem	22	5-6	160	Albany, Ga.	So
49	Moore, Ken*	23	5-8	165	Calhoun, Ga.	Sr
40	Pagliei, Joe*	20	6-0	200	Clairton, Pa.	Jr
21	Paredes, Bob*	24	5-8	175	Irwin, Pa.	Sr
26	Rogers, Shot	21	5-9	165	Mullins	So
53	Thompson, Doug	21	5-10	185	London, Ont., Canada	So
70	Wells, Joel	20	6-0	185	Columbia	So
Fullbacks						
48	Ankuta, Neuf	21	6-0	190	Brooklyn, N. Y.	Jr
31	Griffith, Frank	20	6-0	195	Elberton, Ga.	So
23	Hankinson, Crimmins*	22	5-11	180	Waynesboro, Ga.	Jr
67	O'Dell, Bill*	20	5-10	200	Newnan, Ga.	Jr
34	Spencer, Bob	19	5-11	205	Ogdensburg, N. Y.	So
29	Whitten, Red*	20	5-10	178	Macon, Ga.	Sr

* Lettermen.

COPYRIGHT 1934 THE CLEMONS COLLEGE

Coca-Cola Bottling Company, Anderson, S. C.

C. KIRBY HOOVER, Manager

CLEMSON

PROBABLE STARTING LINEUP

No.	Name	Position
63	WALT LARAWAY . . .	LE
51	CLYDE WHITE . . .	LT
65	BUCK PRIESTER . . .	LG
64	HAMPTON HUNTER . . .	C
25	DICK DeSIMONE . . .	RG
43	TOMMY MATTOS . . .	RT
78	SCOTT JACKSON . . .	RE
66	DON KING	QB
30	BUCK GEORGE . . .	LH
40	JOE PAGLIEI	RH
67	BILL O'DELL	FB

The Tiger Squad

20	Bussey, QB	51	White, LT
21	Paredes, RH	53	Thompson, LH
22	Coleman, RH	55	McLendon, LH
23	Hankinson, FB	56	Kane, LG
24	Avery, C	57	Bowick, RE
25	DeSimone, RG	60	Inabinet, RT
26	Rogers, LH	62	Hicks, LE
27	Sease, RT	63	Laraway, LE
29	Whitten, FB	64	Hunter, C
30	George, LH	65	Priester, LG
31	Griffith, FB	66	King, QB
34	Spooner, FB	67	O'Dell, FB
35	Rhinehart, RG	68	Bunton, RG
36	Williams, QB	70	Wells, LH
38	Rivers, RE	72	Greene, J., RG
39	Bruorton, LG	75	McLellan, C
40	Pagliei, RH	76	Smith, RE
41	Kaltenbach, LG	77	Frick, QB
43	Mattos, RT	78	Jackson, S., RE
44	Marazza, LT	81	Staples, C
45	Hudson, LE	82	Ross, QB
46	Bowen, RE	85	Wall, LE
47	Crain, LT	86	Monroe, RG
48	Ankuta, FB	87	Greene, E., RG
49	Moore, RH	88	Jackson, J., LG

CHESTERFIELD

AMERICA'S MOST POPULAR
2-WAY CIGARETTE

Either Way - THE QUALITY



JEAN AN
THE CORBE

FOR TASTE AND MILDNESS

ITY YOU WANT!



DAN
TWIN

CHESTERFIELD

BEST FOR YOU

PRESBYTERIAN

PROBABLE STARTING LINEUP

No.	Name	Position
35	BOBBY JACKSON . . .	LE
54	LEE FRIERSON . . .	LT
44	WALTER YATES . . .	LG
50	FRANK BOULWARE . .	C
52	LUTHER SHEALY . . .	RG
51	ROBT. HARRINGTON .	RT
55	JOE COUNTS	RE
28	HARRY HAMILTON . .	QB
25	GENE BUTLER	LH
21	GEORGE BLUE	RH
48	ED BROCKENBROUGH	FB

The Blue Hose Squad

20	Armstrong, LHB	40	Daughtry, RE
21	Blue, RHB	41	Allen, C
22	Richards, QB	42	Webb, LHB
23	Johnson, RHB	43	Warren, LG
24	Cook, QB	44	Yates, LG
25	Butler, LHB	45	Goudy, FB
26	Hooks, LE	46	Smith, LG
27	Poole, LHB	47	Haddix, RT
28	Hamilton, QB	48	Brockenbr'gh, FB
29	Bowman, FB	49	McLaughlin, LT
30	Mavromat, RHB	50	Boulware, C
31	Tsacries, RG	51	Harrington, RT
32	Altman, RHB	52	Shealy, RG
33	Freeman, RHB	53	Parker, C
34	Felty, FB	54	Frierson, LT
35	Jackson, LE	55	Counts, RE
36	Carter, QB	56	Brewington, LT
37	Twitty, RE	57	Westenbarger, LT
38	Poe, RG	58	Stevens, LE
39	Martin, LE	59	Weir, RT

CHESTERFIELD

LARGEST SELLING CIGARETTE
IN AMERICA'S COLLEGES

...THEY SATISFY MILLIONS!



PRESBYTERIAN COLLEGE ROSTER

No.	Name	Ht.	Wt.	Hometown	Class
Ends					
55	Counts, Joe*	6-4	185	Brunswick, Ga.	Sr
40	Daughty, Ken*	6-2	175	Macon, Ga.	So
26	Hooks, Jim	5-8	170	W. Palm Beach, Fla.	Fr
35	Jackson, Bobby*	6-1	170	Charlotte, N. C.	Jr
39	Martin, Bob	6-2	190	Ware Shoals	So
58	Stevens, Bob	6-3	195	Glassport, Pa.	Fr
37	Twitty, Charles*	6-1	180	Charlotte, N. C.	Sr
Tackles					
56	Brewington, Bobby	6-0	190	Laurens	Fr
54	Frierson, Lee*	6-0	210	Arcadia, Fla.	So
47	Haddix, Guy	6-0	188	Philippi, W. Va.	Fr
51	Harrington, Robert	6-2	205	Mont Clare	Jr
49	McLaughlin, Jim	6-2	210	Charlotte, N. C.	Fr
59	Weir, Jack	5-10	215	Benwood, W. Va.	Fr
57	Westenbarger, Bob	6-3	220	Lancaster, O.	Fr
Guards					
38	Poe, Alvis	5-9	180	Fock Hill	So
52	Shealy, Luther*	6-0	195	Pacolet	Sr
46	Smith, Herbert	5-9	200	Andrews	Fr
31	Tsacries, Bill	5-7	180	Clearwater, Fla.	So
43	Warren, Tommy	5-10	180	Allendale	So
44	Yates, Walter*	5-8	180	Norfolk, Va.	Sr
Centers					
41	Allen, Jimmy*	5-10	190	Conway	Sr
50	Boulware, Frank*	6-2	205	Rock Hill	Sr
53	Parker, Paul	5-11	190	Steubenville, O.	Fr
56	Prickett, Larmi	6-2	195	Holly Hill	Fr
Quarterbacks					
36	Carter, Gene*	5-10	180	Concord, N. C.	Jr
24	Cook, Felder*	5-10	150	N. Charleston	So
28	Hamilton, Harry*	5-11	180	Seneca	Sr
22	Richards, Tommy	5-10	155	Heath Springs	Fr
Halfbacks					
32	Altman, Gene*	6-0	165	Mullins	Jr
20	Armstrong, Johnny	5-8	155	Honea Path	Fr
21	Blue, George*	5-8	155	Union	Sr
25	Butler, Gene*	5-10	155	Conway	So
33	Freeman, Ken	5-10	170	Concord, N. C.	Fr
23	Johnson, Ray	5-10	155	Whitmire	So
30	Mavromat, Mitchell	5-9	170	Brunswick, Ga.	Fr
27	Poole, Jimmy	6-0	170	Charlotte, N. C.	Fr
42	Webb, Ken	5-10	190	Decatur, Ga.	Fr
Fullbacks					
29	Bowman, Bill	6-0	190	Monogahela, Pa.	Fr
48	Brockenbrough, Eddie	5-10	170	Charlotte, N. C.	So
34	Felty, Pete	5-10	170	Covington, Va.	Fr
45	Goudy, Dick	5-9	185	Barberton, O.	Fr

* Lettermen.

OFFICIALS

Referee: J. W. Lindsey (North Carolina); Umpire: R. Moore (Maritime Academy); Linesman: L. S. Pierce (Davidson); Judge: J. W. Grey (Davidson).



Coca-Cola Bottling Company, Anderson, S. C.

C. KIRBY HOOVER, Manager

CLEMSON'S 1954 QUARTERBACKS



CHARLIE BUSSEY



DON
KING



DON ROSS



LARRY FRICK



TOMMY WILLIAMS

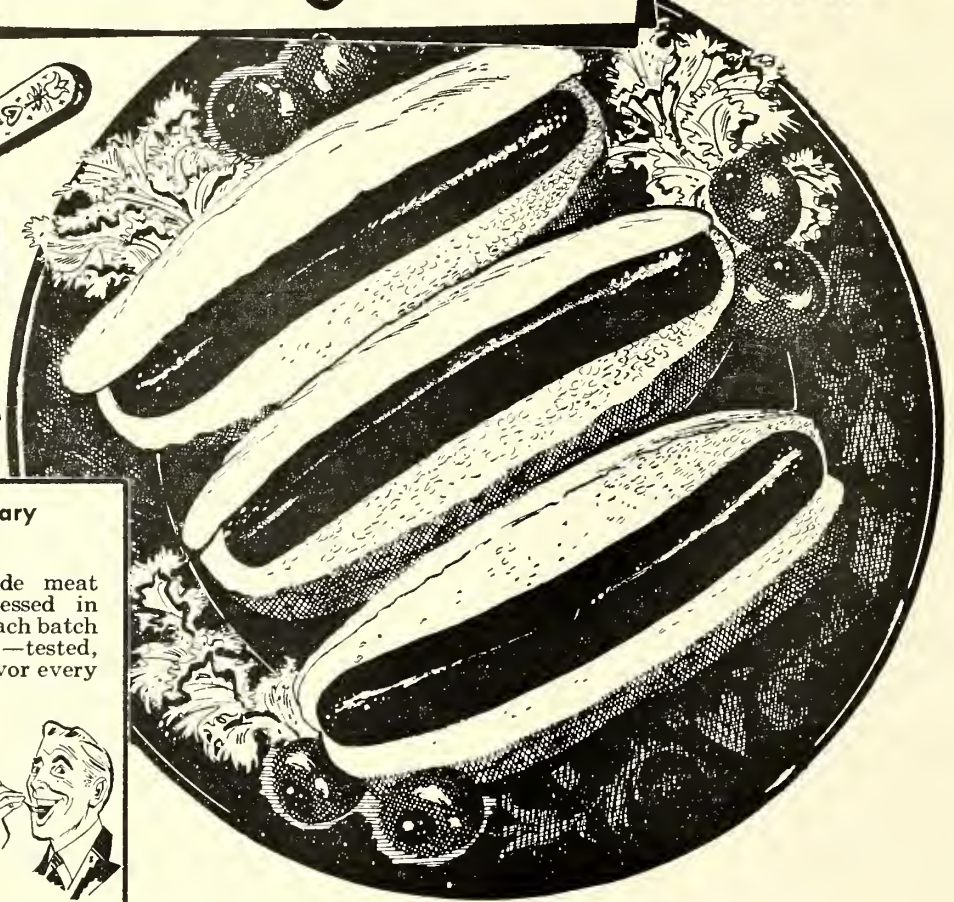
Compare Delicious PET Ice Cream



and

PET Homogenized Milk with Any Other

BEST BET *every time*



The 3 T's that never vary

Taste

Carolina's Pride meat products processed in *small batches*, each batch carefully tasted—tested, insures fine flavor every time.



Tenderness

Only choice, young, grain-fed porkers are selected to insure greater tenderness. Each small batch is rigidly tested before going to market.



Texture

Just as in the cakes you bake, no meat product can be a real treat without fine texture. Each small batch must pass our strict texture tests before it is labeled Carolina's Pride.



DOUBLE YOUR MONEY BACK

Each time you buy a Carolina's Pride product, *you must be completely satisfied*. If and when we fail you, tear the label from the wrapper and mail it to us with a short letter telling us what you paid and why you are not satisfied. We'll send you **DOUBLE** your purchase price promptly. Carolina's Pride, Greenwood, S.C.

You're sure of satisfaction—*every time* when your choice of franks is **Carolina's Pride**

These popular Southern Franks, you see, are *not* mass-produced for the national market. Carolina's Pride Franks are processed right here in South Carolina—in *small batches*—which permits rigid control at every step.

What's more, the porkers are not a hodgepodge of all kinds of breeds from all over—each select pig is a special type, grain fed, and graded U.S. No. 1. The result is *uniformity*—always the same tempting flavor, always the same tender, lean meat.

That's our promise. If and when we fail you, tell us—and get your money back **DOUBLE**.

Try Carolina's Pride Sausage • Ham • Bacon • Little Links • Cold Meats

Greenwood Packing Company
Greenwood, S. C.

Carolina's Pride Meats

CLEMSON'S 1954 ENDS



HARRY HICKS



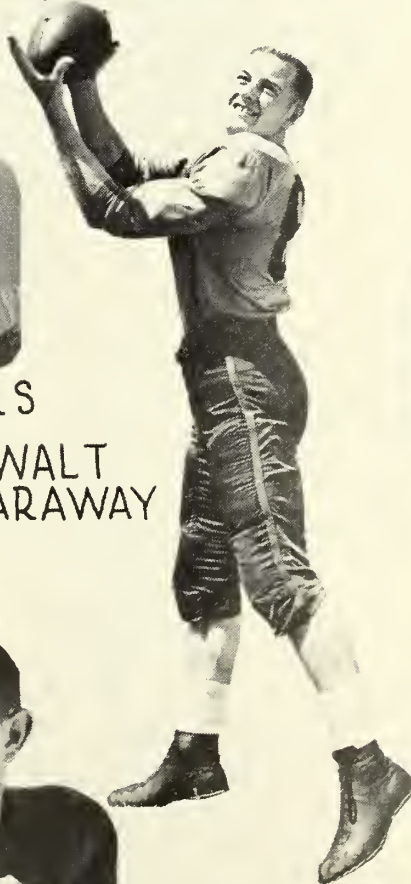
WILLIE SMITH



BILLY HUDSON



DALTON RIVERS



WALT LARAWAY



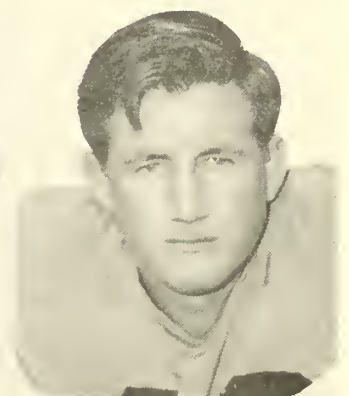
JOE BOWEN



PETE WALL



SCOTT JACKSON



RAY BOWICK

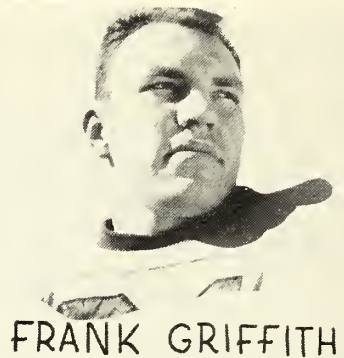
CLEMSON'S 1954 FULLBACKS



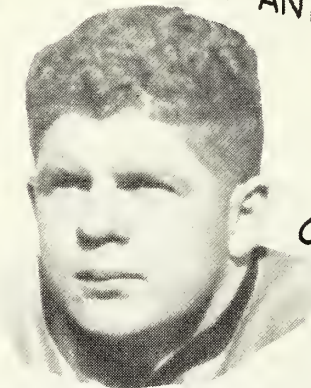
BILL O'DELL



NUEF ANKUTA



FRANK GRIFFITH



"RED" WHITTEN



CRIMMINS

HANKINSON



BOB SPOONER

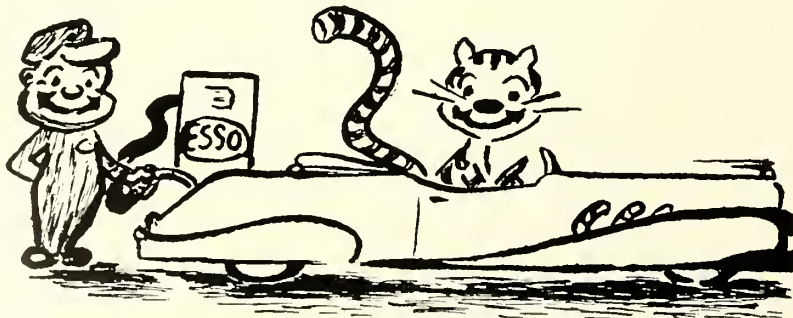
WHEN IN COLUMBIA STOP AT

J. O. "CHINK" FREEMAN'S

Gervais and Huger
Phone 4-9102

Esso Service

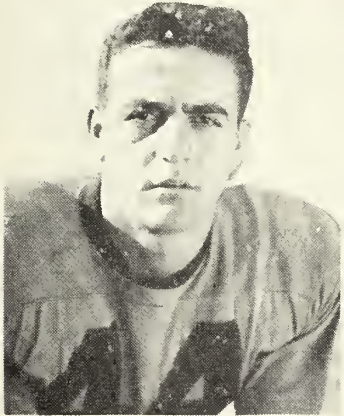
COLUMBIA
S. C.



"WE KEEP 'EM ROLLING"

ROAD SERVICE

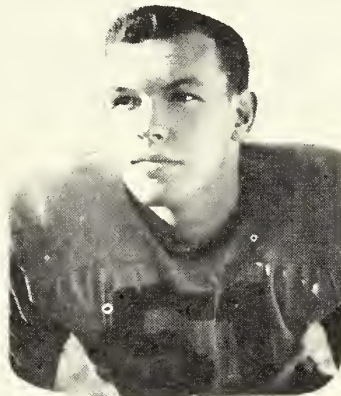
CLEMSON'S 1954 TACKLES



DICK MARAZZA



B.C. INABINET



CLYDE WHITE



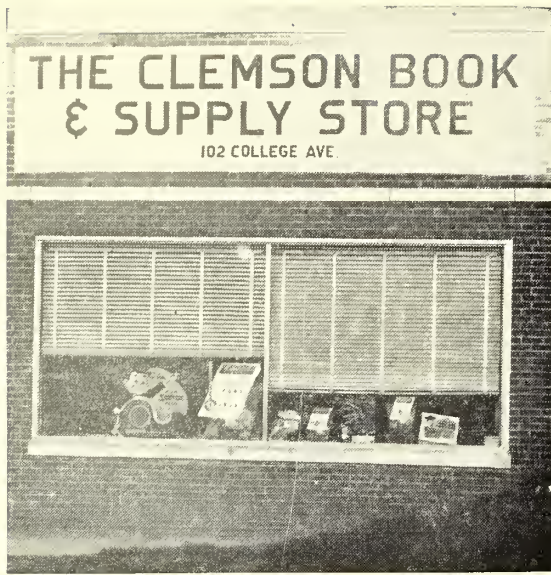
TOMMY
MATTOS



TOMMY SEASE



WILLIS CRAIN



Two familiar old faces
always welcome you
back to the campus.

CLEMSON BOOK STORE
Official College Book & Supply Store

L. C. MARTIN DRUG COMPANY
Serving Clemson Men Since 1908

CLEMSON'S 1954 GUARDS



MARK KANE



JOHNNY GREENE



JERRY JACKSON



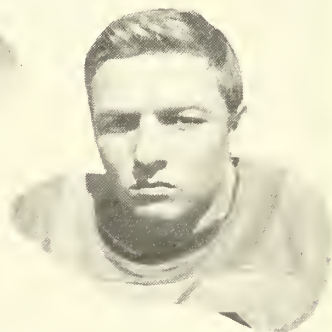
DONALD RHINEHART



DICK
DE SIMONE



EARL GREENE



H. B. BRUORTON



BUCK PRIESTER



KENT MONROE

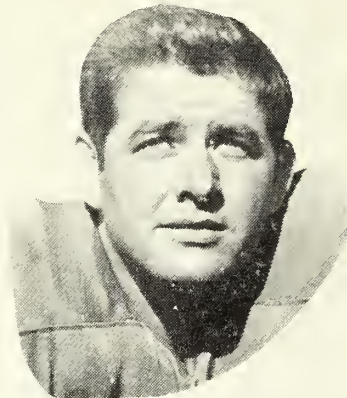


LEON KALTENBACH

CLEMSON'S 1954 CENTERS



DINK STAPLES



BILL McLELLAN



WINGO AVERY



HAMPTON
HUNTER

LAUGHRIDGE'S, Inc.

MAIN AT EARLE STREET

Anderson's Finest

HART SCHAFFNER and MARX
CLOTHES

LEE and STETSON HATS

FREEMAN SHOES

VAN HEUSEN SHIRTS

CLEMSON PHARMACY & BUS STATION

1:30 to 5:00 O'Clock on Sunday
7:00 a.m. to 8:30 p.m. Weekly

Fishing Equipment

Pipes

REVERE and EASTMAN
Motion Picture Machines

Sandwiches & Fountain Service

Morris & Company, Inc.

WHOLESALE GROCERS

Serving Independent Retail
Merchants in the Piedmont Section

Morris & Company, Inc.

PICKENS, SOUTH CAROLINA

Clemson Frosh Footballers Work Hard for Opener

Clemson's 1954 freshman football hopefuls assembled for practice on Monday, Sept. 6, and are presently working hard for their season opener with North Carolina State in Raleigh next Friday night, Sept. 24.

Prospects are shaping up as follows:

End, the shallowest position, features Don Hendrix of Wilmington, N. C., an All-Stater who played for Camden Academy's unbeaten eleven last fall; "Whitey" Jordan, an All-Stater from Florence; Bill Few of Rock Hill, a fine prep back who looks equally at home on the flanks; and Wyatt Cox, an All-City standout from Atlanta.

At tackles, several giants are on hand. And they can move. Looking good have been Johnny Thomason (212) of Olanta, an All-Stater at Lake City High last fall; Ken Pace (225), a regular at North Charleston four seasons; Charlie Lucas (240) of High Point, a standout in the Shrine Bowl game; and Jack Bush (210), All-City in Atlanta.

Guards are manned well by 24-year-old John Grdijan of Rillton, Pa., and star with Uncle Sam; Jim McCanless of Asheville, All-Area; Len Tobias of Manito, Pa., Jack Shoaf of Perryopolis, Pa., All-Area; and Bob Giles, North Charleston's most valuable in 1953.

Center is well-manned by 1953 Prep All-America standout Jack Steinbrecher of Huntington, W. Va.; Bill Neely, an All-Stater from Rock Hill; Jim Pike, a standout on the field from Newnan, Ga.; and Talley Wright, High Point's "most valuable" last fall.

Biggest scramble is at the quarterback spot, though it appears "Gaffney's Gene Crocker, or Bill Barbary of Taylors, or Bobby Fisher of Fairmont have the edge.

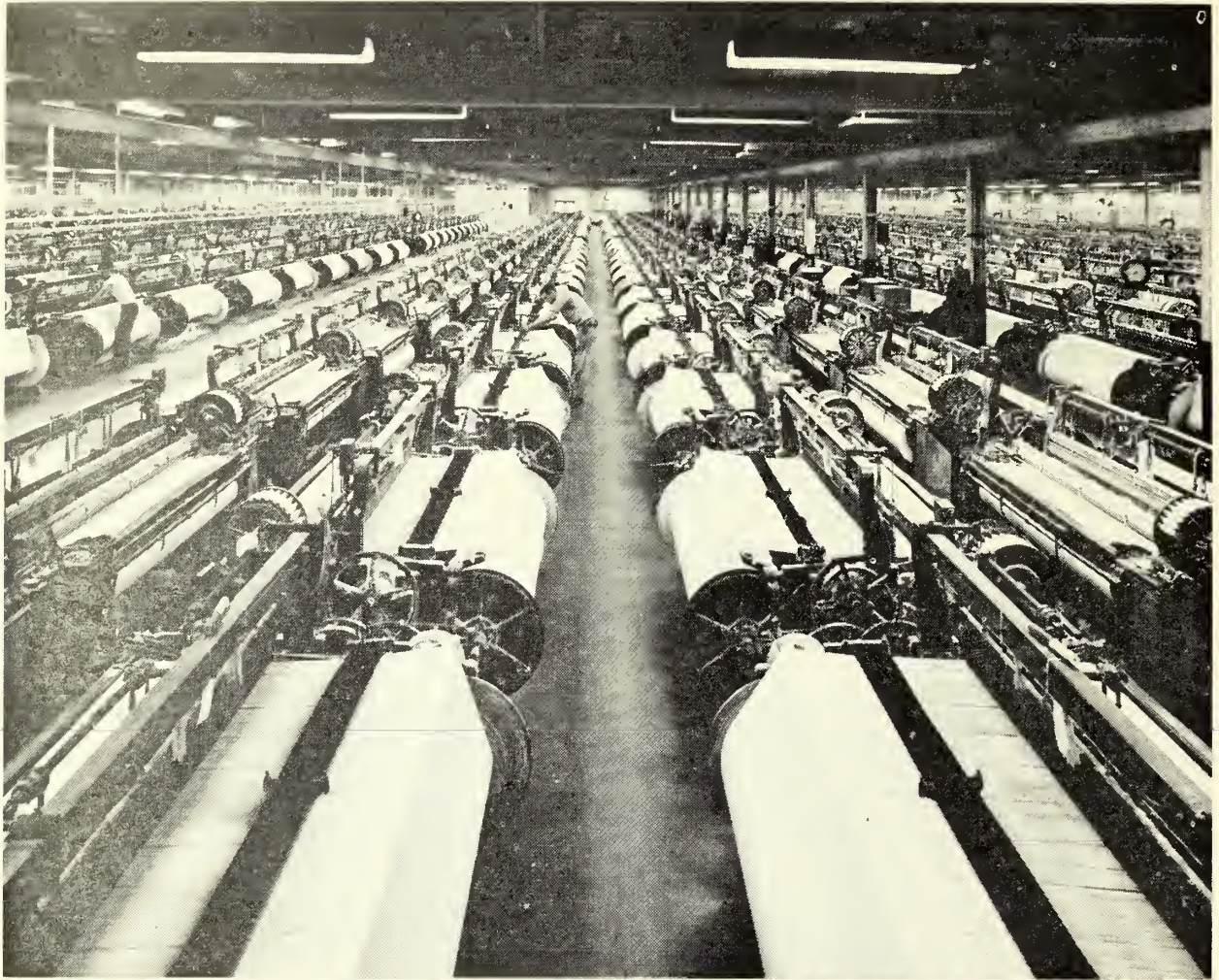
Fastest of the halfbacks are Hubert Greene of Forest City, N. C., and Harold Strange of Columbia. Others working are Fletcher Carter of Charleston, all-Greater Washington, D. C., and Blackie Wilson of Rock Hill.

The three top fullbacks are Jimmy Padgett of Trenton; Joe Stas of Whitney, Pa.; and Bill Thomas of Layton, Pa.

FROSH SCHEDULE

Sept. 24—N. Carolina State, home
 Oct. 1—Georgia, away
 Oct. 20—South Carolina, away
 Oct. 29—Wake Forest, home
 Nov. 13—Duke, here

Name and Hometown	Pos.	Age	Ht.	Wt.
W. J. Allred, Westminster	G	20	6-0	190
Jerry Atkins, Marion, N. C.	QB	20	5-11	180
Bill Barbary, Taylors, S. C.	QB	18	6-3	195
Jimmy Bennett, Charleston, S. C.	T	17	6-2	215
W. F. Biggers, Pendleton	E	21	6-1	190
Harry Bolick, Laurens, S. C.	HB	18	5-10	150
Billy Breedlove, Abbeville, S. C.	HB	18	6-2	210
Jack Bush, Atlanta, Ga.	T	17	6-3	210
Fletcher Carter, Charleston, S. C.	HB	18	5-10	165
Lamar Cleghorn, Griffin, Ga.	T	18	6-4	230
Wyatt Cox, Atlanta, Ga.	E	18	6-4	185
Gene Crocker, Gaffney, S. C.	QB	19	6-3	175
Terry Culpepper, Augusta, Ga.	G	19	5-11	215
Bob DeRose, Washington, Pa.	G	19	5-10	190
Bobby Fisher, Fairmont, N. C.	QB	18	6-5	190
Bill Few, Rock Hill, S. C.	E	20	6-0	175
Joe Frydrych, Trafford, Pa.	T	19	5-11	206
H. G. Galbreath, Easley	E	22	6-1	190
Charles Gambino, Clairton, Pa.	T	18	6-0	230
John Grdijan, Rillton, Pa.	G	24	5-11	195
Hubert Greene, Forest City, N. C.	HB	24	5-8	172
Norman Greene, Inman, S. C.	HB	17	6-2	180
Bob Giles, Charleston, S. C.	G	18	5-10	190
Don Hendrix, Wilmington, N. C.	E	19	6-2	205
Robert Hopkinson, Herminie, Pa.	QB	18	6-1	180
Olin Hunter, Central, S. C.	HB	18	5-9	170
Herman Jackson, Taylors, S. C.	T	18	5-11	220
Don Jones, Asheville, N. C.	E	18	5-10	175
Arthur Jordan, Wilmington, N. C.	C	18	6-2	200
Ronald Jordan, Florence, S. C.	E	18	6-0	185
Charlie Lucas, High Point, N. C.	T	18	6-3	245
Jim McCanless, Asheville, N. C.	G	18	6-1	210
Bill Neely, Rock Hill, S. C.	C	18	6-1	190
Kenneth Pace, N. Charleston, S. C.	T	19	6-2	225
Jimmy Padgett, Trenton, S. C.	FB	18	6-2	220
Jim Pike, Newnan, Ga.	C	19	5-10	195
Joseph Pilot, Rankin, Pa.	C	18	5-11	175
F. E. Pitts, Greenwood	E	18	5-8	150
Edward Plauche, Parkersburg, W. Va.	T	18	6-0	195
Bill Rogers, Mullins, S. C.	HB	24	6-1	185
Jack Shoaf, Perryopolis, Pa.	G	18	6-0	200
Charlie Smith, Charleston, S. C.	T	18	6-0	205
William Southworth, Somerset, Mass.	E	18	6-1	180
Joe Stas, Whitney, Pa.	FB	19	5-10	195
Jack Steinbrecher, Huntington, W. Va.	C	18	6-2	200
Harold Strange, Columbia, S. C.	HB	18	6-0	190
Bill Thomas, Layton, Pa.	FB	20	6-0	206
Johnny Thomason, Olanta, S. C.	T	18	6-2	212
Len Tobias, Manito, Pa.	G	20	5-11	200
Jack Weir, Belton, S. C.	HB	21	5-8	155
J. S. Whisonant, Gaffney, S. C.	G	18	6-0	200
Blackie Wilson, Rock Hill, S. C.	HB	18	6-0	170
Bob Wright, Belton, S. C.	HB	22	6-0	170
Talley Wright, High Point, N. C.	C	18	6-0	195



Weave Shed of the Clemson Plant, Clemson, S. C.

11 times larger than this gridiron

Imagine a cotton mill that covers 14 acres all under one roof . . . where the raw cotton goes in one end and packaged sheets come out the other . . . in a continuous quality-controlled operation.

That's the Clemson Plant of J. P. Stevens & Co., Inc., where the famous Stevens Utica-Mohawk Sheets and Pillow Cases are made.



J. P. Stevens & Co., Inc.

UTICA AND MOHAWK COTTON MILLS CLEMSON, S. C.

Clemson Cheers and Songs

1—15 Rahs

Rah, Rah, Rah Rah Rah
Rah, Rah, Rah Rah Rah
Rah, Rah, Rah Rah Rah
Whole Damn Team!

2—Slow Clemson

C—L—E—M—SON
CLEMSON
CLEMSON
Fight Team Figh.

3—Knit One

Knit One, Purl Two
(Opponent) — Yoo Hoo! (Wave Hdchf)

4—Tiger Roar

Shhh . . . Listen! Shhh . . . Listen!
(Bass Horn Sounds Tiger Roar)
TIGERS!!!!

5—Hit 'em Yell

Clemson (very slow) Tigers (very slow)
6—(Clap hands) 1-2-3-4-5-6 Hit 'em! !

6—T-I-GERS

T-I-GERS
T-I-GERS
T-I-GERS
Fight, Fight, Fight Tigers, Fight!!!

7—Hiii Coach

Hi Coach, Hi Howard
Hi, Hi, Coach Howard!

8—C-L-E-M Incadence Count

Hup-2-3-4
Hup-2-3-4
C-L-E-M-S-O-N
T-I-G-E-R-S
FIGHT TIGERS FIGHT
DAMIT—FIGHT FIGHT

9—Split Stands Yell

Say!..... Say What? ?
That's What What's What? ?
That's what they all say ---
What's what they all say? ?
(Together) Give 'em Hell, Tigers

10—Little Tiger Yell

Little Tiger—Wee (Soft)
Big Tiger—WOW! (Loud)
(Opponent) — Wee (Soft)
Clemson — WOW!!!!

11—Fight Tigers Fight

Fight, Tigers Fight!
Fight, Tigers Fight!
Fight Tigers, Fight Tigers
FIGHT, FIGHT, FIGHT!!!!

12—Hi! Ho! Yell

Hi! Hi!
Ho! Ho!
Clemson Tigers
GO, GO, GO!!!!

13—Ray, Rah Yell

Ray Tigers
Rah Team
Ray, Rah
Tiger Team

14—T-E-A-M

T-E-A-M
Yeaaaa — Team
T-E-A-M
Yeaaa — Team
Fight, Fight
Fight Team, Fight

CLEMSON, ALL HAIL, (Fight Song)

Words and Music — McGarity

Clemson, all hail to thee, A college honored and true
We pledge our love to you, And through the years will never fail
So raise a cheer for that Tiger Team, they'll take that ball right thru the line
And we'll win for our Alma Mater another victory.

ALMA MATER

Where the Blue Ridge yawns its greatness, There the Tigers play
There the sons of dear old Clemson, Reign supreme away.
Dear old Clemson, we will triumph, And with all our might,
That the Tigers roar may echo, O'er the mountain heights.

Clemson is Rebuilding in Basketball

Clemson's basketball team took a nosedive last winter after experiencing better-than-average success over a period of five years, but Coach Banks McFadden has what he thinks will be the remedy in the near future — namely, promising talent.

McFadden, who was a first team; All-America selection in 1939 in sparking Clemson to the Southern Conference championship, has one of the nation's sharpest shooters on hand for varsity play this winter in Bill Yarborough. Other lettermen returning to action are Tommy Smith, Bruce Holzschuh, Buddy Shook, Barry Ryan, Ben Crosland, "Doc" Morgan, and Billy Riser.

Up from last winter's freshman basketball team are "Rock" Stone, Dave Bauman, Bill Landers and Don Shealy.

And among the incoming freshmen are several outstanding players. They include: Carl Reamer of Philadelphia, Pa.; Eddie Attenberger of Greensburg, Pa.; Billy Williams of Moundville, W. Va.; Jack Yockel of Jersey City, N. J.; Eddie Moncrief of Moultrie, Ga.; Francis Brothers of Greenville, S. C.; and Raymond Strock of Cope, S. C.

Facing perhaps their roughest basketball schedule in history in 1954-55, the Tigers aren't expected to climb much; however, in the next year or two, Clemson should give a good account of itself on the hardwood.

1954-55 BASKETBALL SCHEDULE



Dec. 1—Presbyterian, home
 Dec. 3—Duke, away
 Dec. 4—North Carolina, away
 Dec. 7—Georgia, away
 Dec. 14—North Carolina State, home
 Dec. 17—Virginia, home
 Jan. 3—Tennessee, away
 Jan. 4—Tennessee Tech, away
 Jan. 8—Maryland, home
 Jan. 11—Duke, home
 Jan. 15—North Carolina, home
 Jan. 18—South Carolina, home
 Jan. 29—Furman, home
 Feb. 1—Presbyterian, away
 Feb. 4—Wake Forest, away
 Feb. 5—North Carolina State, away
 Feb. 14—Virginia, away
 Feb. 15—Maryland, away
 Feb. 18—South Carolina, away
 Feb. 22—Georgia, home
 Feb. 24—Furman, away
 Feb. 26—Wake Forest, home
 Mar. 3-5—Atlantic Coast Conference playoffs.

Here's the CAPTAIN of our team—



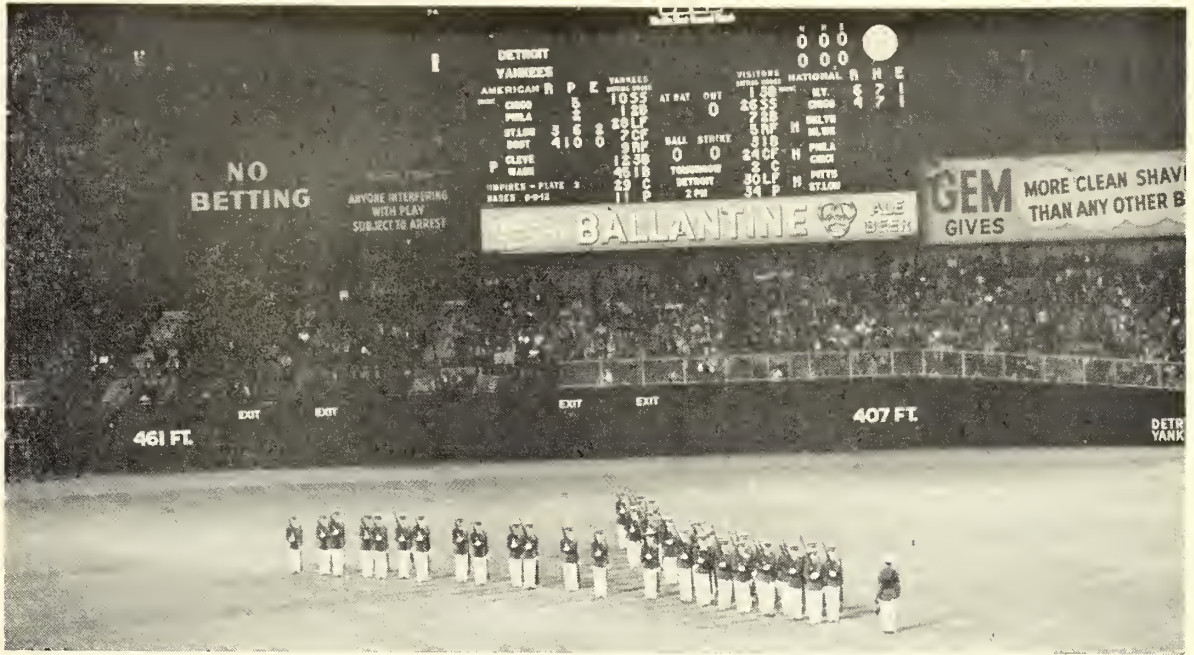
The captain of every Capital flight is backed by an experienced team of flight personnel and other specialists. That's why more than sixty top college and professional athletic teams, including CLEMSON COLLEGE, count on Capital for efficient, economical Special Flight Service.

You, too, can save time and money by flying . . .

Capital AIRLINES

More athletic teams fly Capital than any other airline!





Crack Clemson Drill Platoon on Display in Yankee Stadium

STONE BROTHERS



Complete Outfitters to
Men, Young Men, and Students



108 North Main Street
GREENVILLE, S. C.

WHILE IN CLEMSON VISIT . . . CLEMSON CAFETERIA



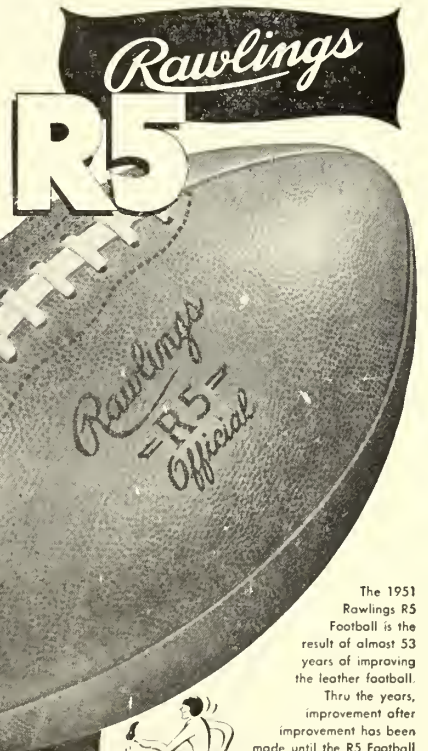
MEALS AND SHORT ORDERS



Y.M.C.A. BUILDING

OPEN TO THE PUBLIC 6:00 - 11:00

Football's
Famous
Favorite!

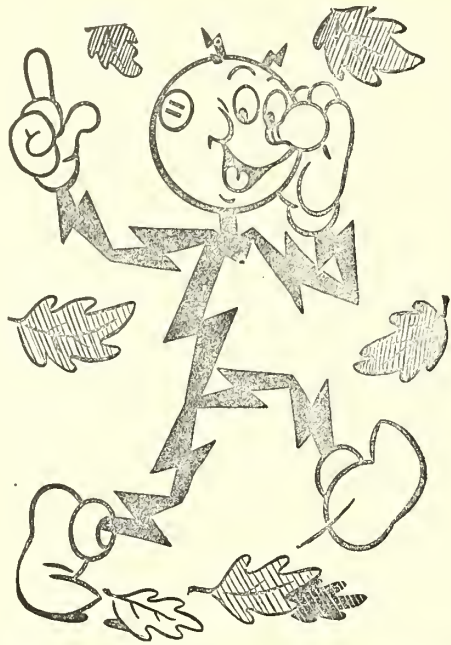


THERE IS NO SUBSTITUTE FOR
THE "KNOW-NOW" BUILT
INTO EVERY R5 FOOTBALL!



The 1951 Rawlings R5 Football is the result of almost 53 years of improving the leather football. Thru the years, improvement after improvement has been made until the R5 Football that will see action in 1951 is the finest football that can be made.

RAWLINGS MANUFACTURING CO.
"The Finest In The Field"
ST. LOUIS 3, MO.



DUKE POWER COMPANY
Serving the Piedmont Carolinas

Clemson's First A. C. C. Crown

Clemson's 1954 baseball team won the first Atlantic Coast Conference baseball championship, giving the college its first (and only) title in the year old A.C.C.



Lefthander Billy O'Dell, rated by many as the best Clemson pitcher in two decades, was the workhorse in getting the crown for his teammates. He won eight games while losing three and led the Conference in strikeouts and earned run average. He was the only A.C.C. player to gain a spot on every All-Star ballot last May and placed on the Baseball Coaches second team, All-America. He signed a bonus contract with the Baltimore Orioles in June.

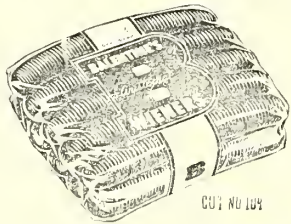
In the hitting department, centerfielder Doug Kingsmore was the key man, setting a new Clemson home run record with 10 and leading the team in batting with a .379 average. Doug also signed with the Baltimore organization and played with the Anderson Rebels most of the summer.

O'Dell and Kingsmore earned spots on the All-Conference nine, as did third baseman Wyman Morris and second baseman Roy Coker (utility). On the second team was Bobby Morris, the catcher. Making the All-State nine was Bill Barnett in addition to the others.

Coach Bob Smith was voted "Conference Coach of the Year" honors by his fellow Atlantic Coast baseball coaches. The Tigers advanced to the District 3 playoffs but were eliminated by Virginia Tech, Southern Conference champions.

Through most of the 1954 regulars were lost to graduation, included among those returning are catcher Bobby Morris, first baseman Dick Swetenburg, utility Lonnie Shealy, outfielder Bill Barnett and pitchers Len Humphries and Ben Crosland.

With a number of good sophomores on hand off last year's strong freshman nine (12-1), it appears the Tigers will give a good account of themselves again in 1955.



Enjoy the Best!

Enjoy BALENTINE'S

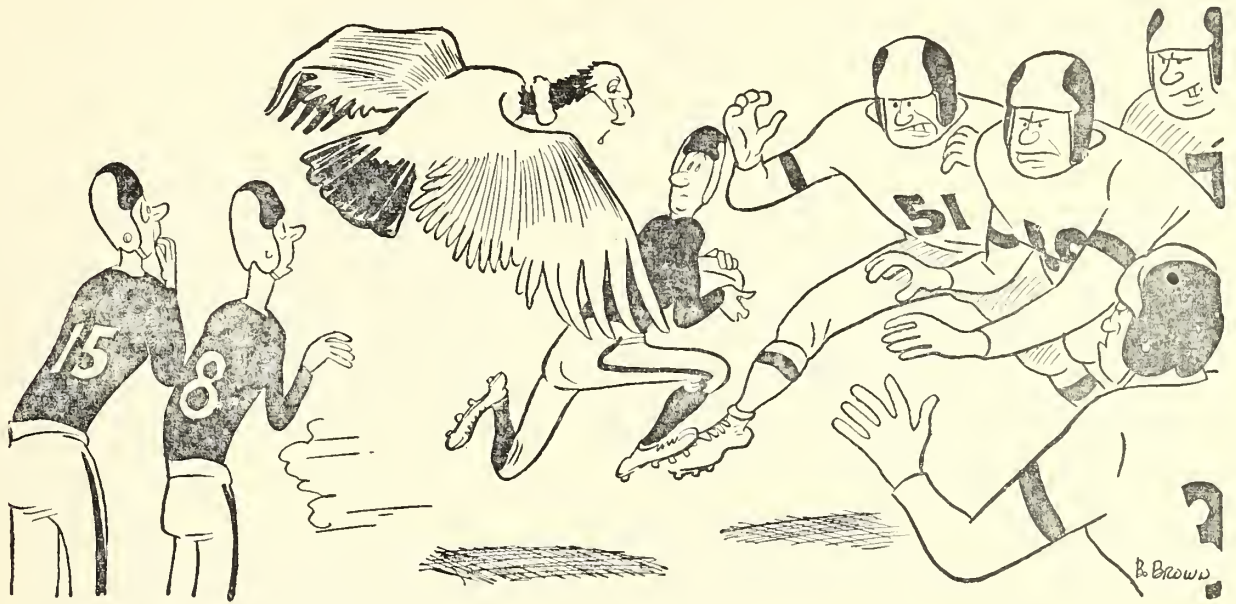
The package with the BIG BLACK "B"

Anderson's Oldest and Finest Men's Shop

MICHAEL-STERN SUITS
 NUNN-BUSH SHOES
 MANHATTEN SHIRTS
 DOBBS HATS

BYER'S MEN'S SHOP

110 N. MAIN STREET ANDERSON, S. C.



"I don't think Roston's going to have much luck on this run!"

Anyone Can Score a Touchdown! In SENECA, It's

Done By Those Shoppers Who Patronize The Following Businesses

Abbott's Mens Shop

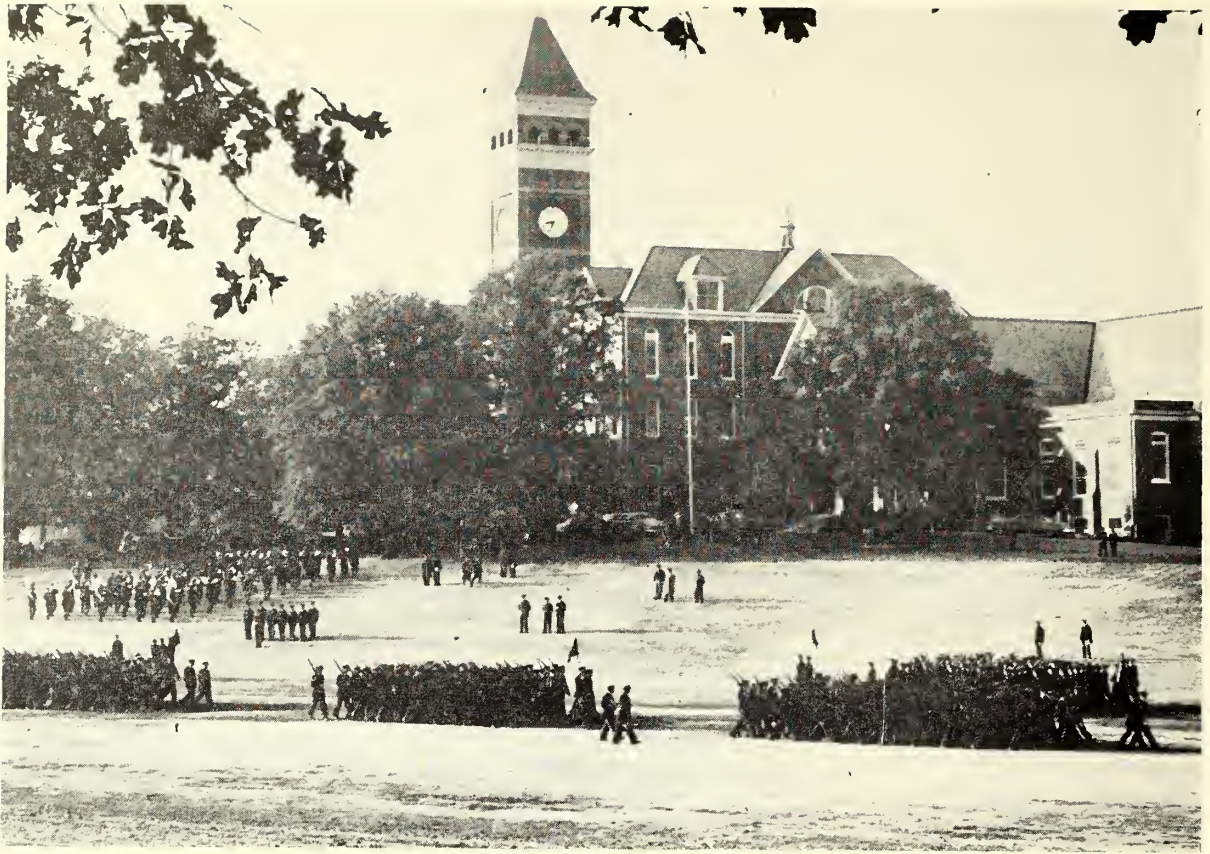
Oconee Office Supply

Ed Waters Chevrolet Co.
Buick — Chevrolet

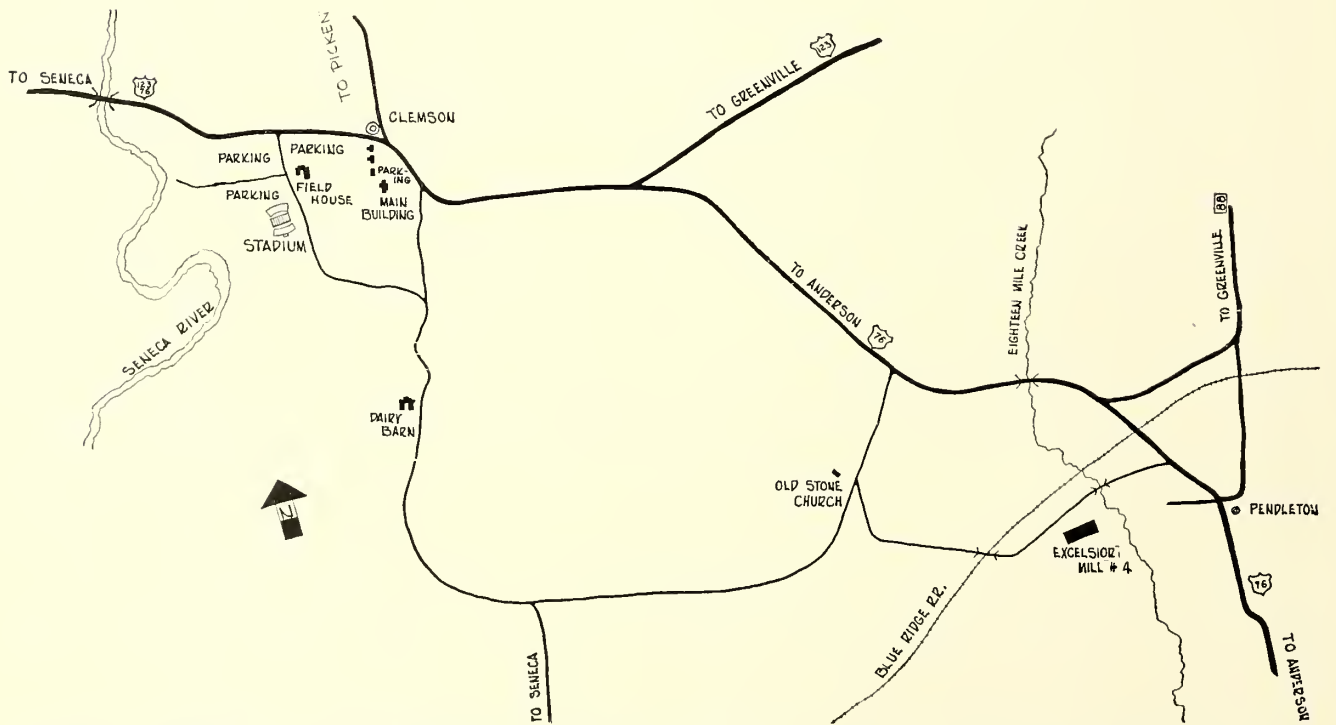
Ross Builders Supplies, Inc.



LET'S GO, TIGERS!



Tillman Hall — Clemson College



In order to facilitate your departure from this game please follow the instructions of Highway patrol.

Clemson Football Network...

Only an expert radio announcer will be able to follow Clemson's tricky T-formation in 1954, so, naturally, Jimmy Coggins, dean of South Carolina's football play-

by-play commentators, was signed by the new Clemson Football Network to broadcast the Tigers' schedule.



Coggins, owner of Newberry Radio Station WKDK, is an old hand at doing the play-by-play of Clemson football games. He followed the Tigers with mike in hand through the 1936-37-38 seasons and was back with them again in 1947-48-49. In 1948, Jimmy was present for

11 straight Clemson victories, including a thrilling 24-23 decision over Missouri in the Gator Bowl.

In more recent years, 1950-51-52, Coggins has done the play-by-play for Radio Station WIS and their "Game of the Week" broadcast. Last fall, the "dean" did the play-by-play of the North Carolina-South Carolina game in addition to many of the Newberry College contests.

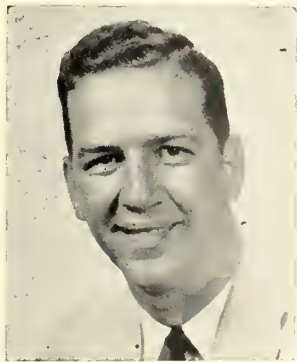
Jimmy Coggins broke into radio 20 years ago with WSPA in Spartanburg, worked at WAIM in Anderson, at Cochran's Jewelry Store in Anderson and with Uncle Sam during World War II before going to Newberry as part owner of WKDK in 1949. He took over as full owner in 1952. Coggins has also been half owner of Union Radio Station WBCU for the past year and a half.

Ed Osborne, director of both the Clemson News Bureau and sports publicity office from 1947 through the spring of 1950, is one of the best qualified men in South Carolina

to discuss Clemson football or football in general.

His genial personality and clear speaking voice will keep all listeners of Clemson games well filled in with hidden details of the action.

Osborne's radio experience consists of a three-year stay at Radio Station WMSC in Columbia as sales representative and sports director. Since early 1953, Ed has been co-owner, president and manager of Radio Station WBCU in Union.



Genuinely interested in football and the fortunes of Clemson, Osborne was the natural choice to work with Coggins in broadcasting the Clemson schedule in 1954.

SEASTRUNK ELECTRIC COMPANY

COLUMBIA, SOUTH CAROLINA



LIGHTING FIXTURES
ELECTRICAL CONTRACTORS
POWER LINE CONSTRUCTION



GREENVILLE ICE CREAM COMPANY

711 W. Washington Street

Greenville, South Carolina



J. E. SIRRINE COMPANY

Engineers

GREENVILLE, SOUTH CAROLINA

'53 Player Statistics . . .

RUSHING	Att.	Yds.	Lost	Net	Avg.
King, qb	79	350	107	243	3.1
Whitten, fb	42	243	5	238	5.7
O'Dell, rh	42	235	2	233	5.5
Wells, lh	42	213	11	202	4.8
Pagliei, rh	35	208	22	186	5.3
George, lh	35	205	20	185	5.3
Hankinson, fb	34	132	2	130	3.8
Ross, fb	34	129	0	129	3.8
Gressette, fb	19	88	2	86	4.5
Williams, qb	22	72	12	60	2.7
Moore, rh	18	71	11	60	3.3

PASSING	Att.	Com.	I	TD	Yds.	Pct.
King, qb	98	46	11	5	706	46.9
Williams, qb	33	9	3	2	181	27.3
Calvert, qb	10	5	1	0	71	50.0

RECEIVING	No.	Yds.	TD	Avg.
Gaskin, le	21	426	5	20.3
Jackson, re	15	252	2	16.8
Laraway, le	4	86	0	21.5
Wells, lh	4	25	0	6.3
Pagliei, rh	3	53	0	17.7
O'Dell, rh	3	31	0	10.3
Bowen, re	3	28	0	9.3
George, lh	2	5	0	2.5

SCORING	TD	EPA	EPM	FG	Pts.
Gaskin, le	5	0	0	0	30
King, qb	3	0	0	0	18
Jackson, re	3	0	0	0	18
George, lh	2	0	0	0	12
O'Dell, rh	2	0	0	0	12
Ross, fb	2	0	0	0	12
Hankinson, fb	1	0	0	0	6
Pagliei, rh	1	0	0	0	6
Wells, lh	1	0	0	0	6
Williams, qb	1	0	0	0	6
Hubert, qb	0	9	6	0	6
Shown, fb	0	6	5	0	5
Gressette, fb	0	4	2	0	2
Whitten, fb	0	1	1	0	1

PUNTING	No.	Yds.	TD	Avg.
Pagliei, rh	11	415	0	37.7
King, qb	18	668	0	37.1
Shown, fb	3	121	0	40.3
Hubert, qb	5	174	0	34.8
George, lh	5	150	0	30.0

PUNT RETURNS	No.	Yds.	TD	Avg.
Jackson, re	1	41	1	41.0
Bowen, re	1	25	0	25.0
King, qb	4	36	0	9.0
George, lh	2	12	0	6.0

PASS INTER-CEPTIONS	No.	Yds.	TD	Yds.
Moore, rh	2	85	0	42.5
Hankinson, fb	2	10	0	5.0
Hildebrand, lg	2	7	0	3.5
King, qb	2	0	0	0.0
Williams, qb	1	8	0	8.0
Ross, fb	1	6	0	6.0
Hunter, c	1	5	0	5.0

Compliments of
**Champion
Knitwear Co., Inc.**

ROCHESTER, N. Y.



Manufacturers of Athletic Knit
Goods for Colleges and Schools



CHAMPION PROCESSED SPORTWEAR

WITH CLEMSON DESIGNS SOLD BY

HOKE SLOAN at CLEMSON

Before Disaster Strikes
Be **SURE** of Your Insurance
with

Lawrence & Brownlee Agency

Southern Insurance Specialists

Telephone 5-8221 — 122 N. Main Street

ANDERSON, S. C.



"BETTER BE SAFE THAN SORRY"



Complete Fire, Casualty & Bond Coverage



"Cheer up, Vernon, we won't have these delays when we get McLean service!"



M'LEAN

TRUCKING COMPANY

General Offices • Winston-Salem, N. C.

"WE PULL FOR INDUSTRY"

Facts in a Hurry . . .

RETURNING LETTERMEN (23)

Ends: Joe Bowen, Scott Jackson, Walt Laraway, Pete Wall.
Tackles: B. C. Inabinet, Tommy Mattos, Clyde White.
Guards: Nolten Hildebrand, Mark Kane, Buck Priester.
Centers: Wingo Avery, Hampton Hunter, Bill McLellan.
Quarterbacks: Don King, Bob Paredes, Don Ross, Tommy Williams.
Left Halfback: Buck George.
Right Halfbacks: Ken Moore, Joe Pagliei.
Fullbacks: Crimmins Hankinson, Bill O'Dell, "Red" Whitten.

1953 LETTERMEN LOST (12)

Ends: Dreher Gaskin.
Tackles: Nathan Gressette.
Guards: Gene Garrison, Joe LaMontagne, Ormond Wild, Charlie Wyatt.
Centers: Andy Small.
Quarterbacks: Forrest Calvert, Pooley Hubert.
Left Halfbacks: Jimmy Wells.
Right Halfbacks: None
Fullbacks: Lawrence Gressette, Jack Shown.

1953 RESULTS

Clemson 33	Presbyterian 7
Clemson 14	Boston College 14
Clemson 0	Maryland 20
Clemson 7	Miami 39
Clemson 7	South Carolina 14
Clemson 18	Wake Forest 0
Clemson 7	Georgia Tech 20
Clemson 34	The Citadel 13
Clemson 19	Auburn 45

1953 ALL-OPPONENTS

LE—Jim Pyburn, Auburn sophomore
LT—Stanley Jones, Maryland senior
LG—Frank Mincevich, South Carolina junior
C—Larry Morris, Georgia Tech junior
RG—Jake Shoemaker, Georgia Tech, junior
RT—Bob Bartholomew, Wake Forest sophomore
RE—Clyde Bennett, South Carolina senior
QB—Bernie Faoney, Maryland senior
LH—Chester Hanulak, Maryland senior
RH—Billy Teas, Georgia Tech junior
FB—Ralph Felton, Maryland senior

CLEMSON'S ALL-AMERICANS

1939	_____	Banks McFadden, tailback
1940	_____	Joe Blalock, end
1941	_____	Joe Blalock, end
1948	_____	Bobby Gage, safety
1950	_____	Jackie Calvert, safety

CLEMSON'S BOWL RECORD

1940 Cotton Bowl—Clemson 6 Boston College 3
1949 Gator Bowl—Clemson 24 Missouri 23
1951 Orange Bowl—Clemson 15 Miami 14
1952 Gator Bowl—Clemson 0 Miami 14

CLEMSON'S PROS OF 1954

Fred Cone—Green Bay fullback (fourth year)
Dreher Gaskin—Detroit end (first year)
Bob Hudson—Philadelphia end (fourth year)
Ray Mathews—Pittsburgh halfback (fourth year)

KEYS PRINTING COMPANY

Established 1869

85 YEARS OF SERVICE

PRINTING RULING BINDING
LITHOGRAPHING ENGRAVING

Telephone 2-5301

GREENVILLE, SOUTH CAROLINA

JOIN I P T A Y

and see

HOKE SLOAN

An Old Clemson Man

Selling Gent's Furnishings

to Clemson Men at The Right Price

CLEMSON SOUTH CAROLINA

The Products of . . .

AMERICAN BAKERIES

Are Unequaled



Bakers of Delicious, Wholesome

MERITA

Bread and Cakes



AMERICAN BAKERIES COMPANY

ANDERSON, SOUTH CAROLINA

CLEMSON'S TIGERS

"The Best in Sportsmanship"

ANDERSON, S. C.

Clemson's Best Friend"

CAROLINA

NATIONAL BANK

"The Best in Banking"



"ANDERSON'S HOME OWNED BANK"



Two convenient locations:

Main Office
On the Square

Drive-In Branch
1510 N. Main St.

"PLAY BALL" with TOM SLATE
For Health's Sake — "It Pays To Play"

Complete Line of

GOLF TENNIS BASEBALL
FOOTBALL BASKETBALL
SOFTBALL EQUIPMENT, ETC.

- PENNSYLVANIA
- RAWLINGS
- SPALDING
- VOIT RUBBER COMPANY

TOM SLATE
Athletic Equipment Co.

592 Peachtree Street, N.E.

ATLANTA, GEORGIA

TED ZUBER, Representative
TOM GROOVER JACK GLOVER

Refresh Without Filling . . .



TERRY BOTTLING CO., ANDERSON, S. C.

It's a Record . . .

TEAM — GAME

Most points, 122 (Guilford, 1901)
Greatest victory margin, 122-0 (Guilford, 1901)
Greatest defeat margin, 7-74 (Alabama, 1931)
Most first downs, 23 (Auburn, 1951)
Most rushing plays, 76 (South Carolina, 1940)
Most yards rushing, 516 (Presbyterian, 1945)
Most TD passes, 4 (Auburn, 1947)
Most passes attempted, 32 (Florida, 1929)
Most passes completed, 16 (Auburn, 1951)
Most yards passing, 280 (Furman, 1947)
Most passes intercepted, 5 (South Carolina, 1940)
Most passes had intercepted, 6 (Florida, 1952; Auburn, 1953)
Most plays, run and pass, 90 (South Carolina, 1940)
Most yards, run and pass, 597 (Presbyterian, 1945)
Most punts, 17 (South Carolina, 1943)

INDIVIDUAL — GAME

Most TD's, 4 (Fred Cone vs Auburn, 1950)
Most TD passes, 4 (Bobby Gage vs Auburn, 1947)
Most TD's run and pass, 5 (Bobby Gage vs Auburn, 1947)
Most TD passes caught, 3 (Dreher Gaskin vs Auburn, 1953)
Most yards rushing, 234 (Don King vs Fordham, 1952)
Best rushing average, 30.3 (Bobby Gage netted 182 yards in 6 tries vs Presbyterian, 1947)
Most pass completions, 15 (Billy Hair vs Auburn, 1951)
Most yards passing, 245 (Bobby Gage vs Furman, 1947)
Most offensive plays, 45 (Billy Hair vs Auburn, 1951)
Most yards run and pass, 374 (Bobby Gage vs Auburn, 1947)
Most passes caught, 10 (Henry Walker vs Auburn, 1947)
Most yards pass receiving, 148 (Henry Walker vs Auburn, 1947)
Most punts, 13 (Marion Butler vs Wake Forest, 1942)
Most punt returns, 10 (Shad Bryant vs Furman, 1939)
Most yards punt returns, 101 (Bobby Gage in 3 tries vs N. C. State, 1948)

INDIVIDUAL — SEASON

Most TD's, 15 (Fred Cone, 1950)
Most TD passes, 11 (Bobby Gage, 1948)
Most TD's run and pass, 17 (Bobby Gage, 1947)
Most TD passes caught, 7 (Glenn Smith, 1951)
Most extra points, 38 (Jack Miller, 1948)
Most rushing attempts, 184 (Fred Cone, 1950)
Most yards rushing, 845 (Fred Cone, 1950)
Best rushing average, 7.2 yards (Billy Poe netted 380 yards in 53 tries in 1945)
Most pass attempts, 164 (Billy Hair, 1951)
Most pass completions, 67 (Billy Hair, 1951)
Most yards passing, 1004 (Billy Hair, 1951)
Most offensive plays, 324 (Billy Hair, 1951)
Most yards run and pass, 1702 (Billy Hair, 1951)
Most passes caught, 39 (Glenn Smith, 1951)
Most yards pass receiving, 632 (Glenn Smith, 1951)
Most passes intercepted by, 7 (Fred Knoebel, 1951)
Most punts, 73 (Marion Butler, 1942)
Best punting average, 43.5 (Banks McFadden for 65 punts, 1939)
Most punt returns, 31 (Shad Bryant, 1939)
Most yards punt returns, 487 (Shad Bryant in 27 tries, 1938)

Compliments of

DIXIE-HOME STORES

Where You Get

THE BEST FOR LESS . . . PLUS

S & H GREEN STAMPS

THE HOUSE OF QUALITY

Serving South Carolina Businesses
and Schools Since 1844

The R. L. Bryan Company

1440 MAIN STREET

COLUMBIA, SOUTH CAROLINA

Sullivan Hardware Co.

ANDERSON, S. C.

SPORTING GOODS — FARM IMPLEMENTS

HOUSEHOLD WARE — GIFTS



Serving This Section 69 Years

We want to be . . .

Your Headquarters in South Carolina
for Office Machines, Equipment & Supplies

with 4 stores to serve you

● ANDERSON ● GREENWOOD
● GREENVILLE ● SPARTANBURG

Harper Brothers
INC.

OFFICE MACHINES • EQUIPMENT • SUPPLIES

DUCKETT FUNERAL HOME

Courteous and Reliable Service

FUNERAL AMBULANCE

Central, South Carolina

JOHN G. DUCKETT, Class of '18

S. A. KOTT COMPANY

MAKERS OF

Esko and Archdale

SPORTSWEAR

Belton, South Carolina



AVAILABLE AT ALL BELK STORES

CHEATHAM

GREENVILLE
HARDWARE CO.

Serving You from Two Convenient Locations

with a complete line of

Hardware and Paints



FREE AND EASY PARKING



201 Buncombe St.

648 S. Main St.

Greenville, South Carolina

1954 Composite Schedule

TEAM	Week of Sept. 18	Week of Sept. 25	Week of Oct. 2	Week of Oct. 9	Week of Oct. 16	Week of Oct. 23	Week of Oct. 30	Week of Nov. 5	Week of Nov. 13	Week of Nov. 20	Week of Nov. 27
Presbyterian	Clemson* Clemson*		Furman Greenville (1st)*	Davidson Clinton (8th)	Wofford Spartanburg* Charleston	Citadel Charleston	Catawba Salsbury*	Stetson Clinton (5th)	Appalach. St. Boone, N. C.*		Newberry Clinton (23th)
Georgia	Fla. State Tallahassee* A. Hens	Clemson A. Hens	Texas A&M Athens	U. N. C. Chapel Hill	Vanderbilt Athens	Tulane New Orleans	Alabama Birmingham	Florida Jacksonville	Auburn Columbus, Ga.		Georgia Tech Athens
Virginia Tech	N. C. State Blacksburg	Wake Forest Richmond	Clemson Clemson	W & L Lexington	Richmond* Richmond*	Virginia Rocnoke	W & M Blacksburg	Geo. Wash. Alexandria	Waynesburg Blacksburg		V. M. I. Rocnoke (25th)
Florida	Rice Houston*	Ga. Tech. Atlanta	Auburn Gainesville	Clemson Jacksonville*	Kentucky Gainesville	L. S. U. Baton Rouge*	Miss. State Gainesville	Georgia Knoxville	Tennessee Knoxville		Miami Gainesville
South Carolina†		Army West Point	West Va. Columbia*	Furman Furmanville	West Virginia Martinsburg	Clemson Columbia (21st)	Maryland Columbia	U. N. C. Chapel Hill	Virginia Columbia		Duke Durham
Wake Forest		Va. Tech. Richmond	N. C. State Wake Forest	Maryland W.-Salem	Geo. Wash. Washington (15th)*	U. N. C. Chapel Hill	Clemson Charlotte	Richmond Richmond	Duke Wake Forest		W & M Blacksburg
Furman	Newberry Greenville (17th)*	Miami Miami (24th)*	Presbyterian Greenville (1st)*	S. Carolina Greenville	Citadel Greenville	Davidson Charlotte (22nd)*	N. C. State Raleigh*	Clemson Clemson	Florida St. Tallahassee		Wofford Greenville
Maryland	Kentucky Lexington		U.C.L.A. Los Angeles (1st)*	Wake Forest W.-Salem	U. N. C. Chapel Hill	Miami Miami (22nd)	S. Carolina Columbia	N. C. St. College Park	Clemson College Park		Geo. Wash. College Park (23th)
Auburn		Chattanooga Auburn	Florida Gainesville	Kentucky Lexington*	Georgia Tech Atlanta	Florida St. Auburn	Tulane Mobile	Miami Birmingham	Georgia Columbus		Alabama Birmingham
The Citadel‡		Elon Charleston	Davidson Charleston*	Richmond Charleston	Furman Greenville	P.C. Charleston	Wofford Orangeburg (29th)	Newberry Charleston	V. M. I. Lexington		Clemson Clemson

* Night games † South Carolina and The Citadel play each other on Saturday, Dec. 4.

Trailways takes you

ALL THE WAY!



Ride New

AIR-SUSPENSION

TRAILWAYS THRU-LINERS

★ You board and leave your Trailways bus right in the heart of town—so simple and convenient for business or shopping trips. And what comfortable travel in these new buses! Air-suspension “springs” . . . deep, reclining seats

. . . cooled, constantly conditioned air. Trailways drivers are unexcelled in their record for safety . . . noted for their courtesy. Next time, go Trailways, and you’ll see why it’s known as the “Route of Southern Hospitality”.



Three Thru-Liners
Daily to Dallas, Texas



Three Thru-Liners
Daily to Norfolk, Va.



Three Thru Trips
Daily to Columbia



Six Thru Trips
Daily to Charlotte, N. C.



Six Trips Daily to
New York City
(Two Thru-Liners)



Six Trips Daily to
Atlanta, Ga.
(Six Thru-Liners)



For Charter of Schedule
Information Call Your

**TRAILWAYS
AGENT**

Phone CAnal 40921
ANDERSON, S. C.



CAROLINA SCENIC STAGES

SPARTANBURG, SOUTH CAROLINA TELEPHONE 5631

HAMISH TURNER (Clemson Class of '29) President



TRAILWAYS *the route of the* **THRU-LINERS**

What makes
a Lucky
taste better?

"IT'S TOASTED"
to taste better!



LUCKIES TASTE BETTER CLEANER,
FRESHER,
SMOOTHER!

COPR. THE AMERICAN TOBACCO COMPANY